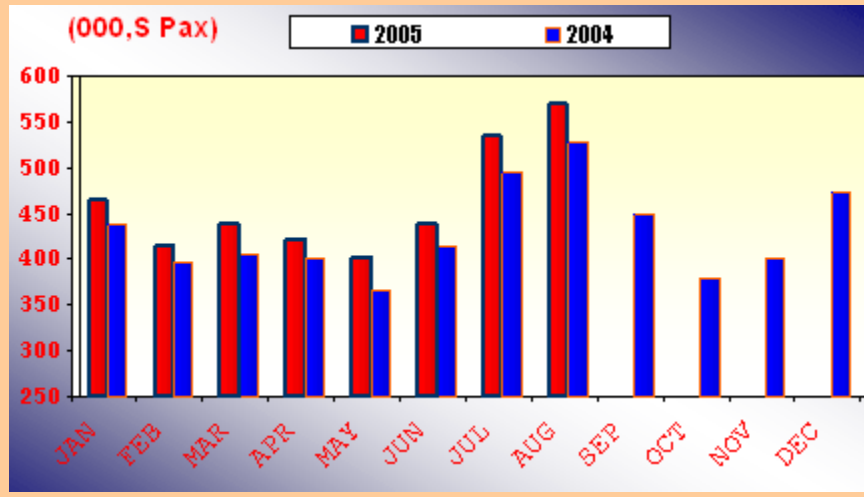
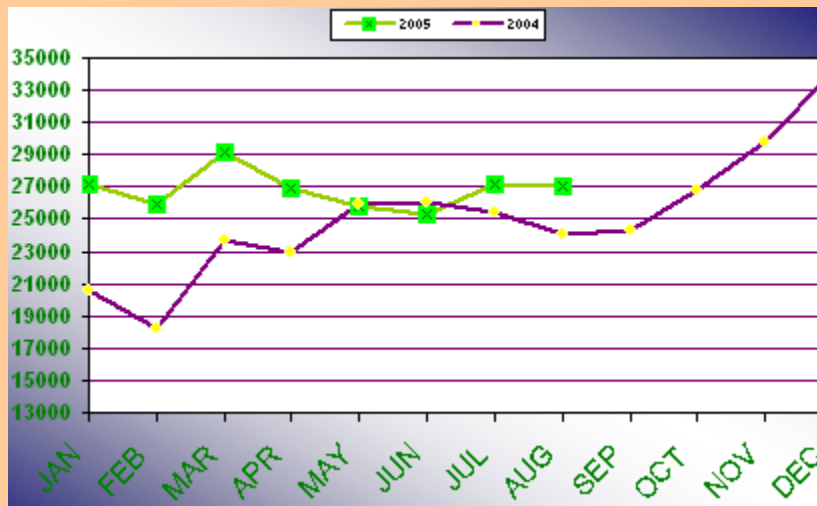


Passenger Traffic:-



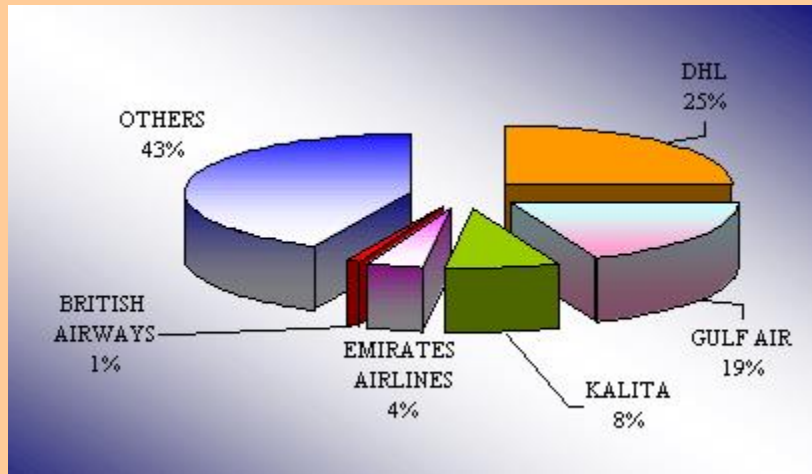
	Month	Year	Growth	2005	2004	Growth
	AUG/05	AUG/04				
Disembarked	287,507	259,295	11%	1,684,394	1,523,450	11%
Embarked	256,177	234,590	9%	1,714,271	1,556,540	10%
Transit	25,849	33,227	-22%	282,446	361,471	-22%
TOTAL	569,533	527,112	8%	3,681,111	3,441,461	7%

Cargo and Mail:-



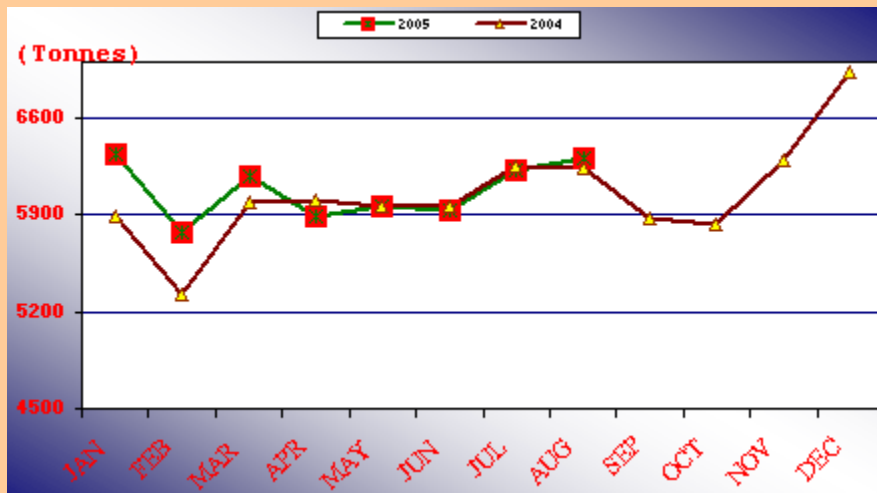
	Month	Year	Growth	2005	2004	Growth
	AUG/05	AUG/04				
Cargo and Mail	27,057	24,059	12%	214,275	186,745	15%

Top 5 Airlines-Cargo & Mail Throughput :-



Carrier	Cargo&Mail(Tonnes)	% Share	% Change from same period last year
DHL	6,668	25%	2.5%
GULF AIR	5,274	19%	8.1%
KALITA	2,065	8%	-17.0%
EMIRATES AIRLINES	1,051	4%	-3.2%
BRITISH AIRWAYS	329	1%	-45.2%
OTHERS	11,670	43%	28.3%
TOTAL	27,057	100.00%	12.5%

Aircraft Movements:-



Aircraft Movements	Month	Year	Growth
6,300	AUG/05	2005	1%
6,235	AUG/04	2004	2%
48,587	Year	2005	
47,601	Year	2004	