

# Bahrain International Airport

## Traffic Statistics & Trends - December 2007

### PASSENGERS

BIA	DEC 07	DEC 06	%	CUM 2007	CUM 2006	%
Disembarked	338,920	266,418	27%	3,532,661	3,224,608	10%
Embarked	359,438	282,813	27%	3,449,511	3,137,757	10%
Transit	31,533	32,156	-2%	337,162	333,660	1%
<b>TOTAL</b>	<b>729,891</b>	<b>581,387</b>	<b>26%</b>	<b>7,319,334</b>	<b>6,696,025</b>	<b>9%</b>

### IMMIGRATION

	DEC 07	DEC 06	%	CUM 2007	CUM 2006	%
Arrival	176,255	151,374	16%	1,966,851	1,659,937	18%
Departure	174,165	148,796	17%	1,714,667	1,433,374	20%
<b>TOTAL</b>	<b>350,420</b>	<b>300,170</b>	<b>17%</b>	<b>3,681,518</b>	<b>3,093,311</b>	<b>19%</b>

TRANSFER	DEC 07	DEC 06	%	CUM 2007	CUM 2006	%
<b>TOTAL</b>	<b>347,938</b>	<b>249,061</b>	<b>40%</b>	<b>3,300,654</b>	<b>2,719,823</b>	<b>21%</b>

### CARGO & MAIL (TONNES)

	DEC 07	DEC 06	%	CUM 2007	CUM 2006	%
<b>TOTAL</b>	<b>36,122</b>	<b>38,178</b>	<b>-5%</b>	<b>377,160</b>	<b>358,670</b>	<b>5%</b>

### AIRCRAFT MOVEMENTS

BIA	DEC 07	DEC 06	%	CUM 2007	CUM 2006	%
<b>TOTAL</b>	<b>8,361</b>	<b>7,433</b>	<b>12%</b>	<b>87,417</b>	<b>80,538</b>	<b>9%</b>

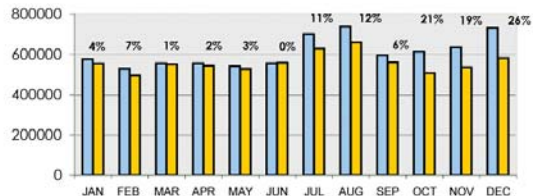
OVERFLYING	DEC 07	DEC 06	%	CUM 2007	CUM 2006	%
<b>TOTAL</b>	<b>29,880</b>	<b>27,055</b>	<b>10%</b>	<b>315,282</b>	<b>271,544</b>	<b>16%</b>

### BAFCO (GALLONS)

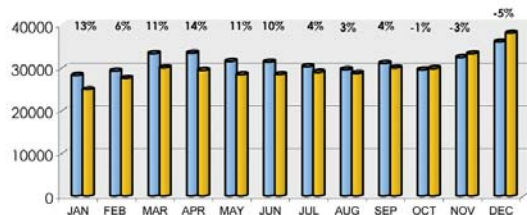
COMPANY	DEC 07	DEC 06	%	CUM 2007	CUM 2006	%
Bapco	10,287,871	9,081,310	13%	109,761,035	107,249,624	2%
Chevron**	6,353,687	5,401,800	18%	59,011,342	62,332,539	-5%
BP	2,224,216	2,138,344	4%	26,861,619	27,342,154	-2%
<b>TOTAL</b>	<b>18,865,774</b>	<b>16,621,454</b>	<b>14%</b>	<b>195,633,996</b>	<b>196,924,317</b>	<b>-1%</b>

## TOTAL PASSENGERS AT BIA

FAX in Millions



## TOTAL CARGO CARRIED VIA BIA



## TOTAL BAFCO SALES IN GALLONS



# Bahrain International Airport

## BIA Movements & Overflying Summary - (JAN - DEC 2007)

BIA Movements									
Category	Average Movements			CUM 2007	CUM 2006	Growth %	% MOV		
	Day	Week	Month						
Passengers	183	1,278	5,110	61,323	54,838	12%	70%		
Cargo	43	304	1,218	14,611	13,121	11%	17%		
Military	26	184	736	8,835	10,329	-14%	10%		
Others	8	55	221	2,648	2,250	18%	3%		
<b>TOTAL</b>	<b>260</b>	<b>1,821</b>	<b>7,285</b>	<b>87,417</b>	<b>80,538</b>	<b>9%</b>	<b>100%</b>		

Overflying Movements									
Category	Average Movements			CUM 2007	CUM 2006	Growth %	% MOV		
	Day	Week	Month						
Passengers	612	4,287	17,146	205,754	180,597	14%	65%		
Cargo	35	248	992	11,901	7,593	57%	4%		
Military	180	1,261	5,043	60,520	59,638	1%	19%		
Others	110	773	3,092	37,107	23,716	56%	12%		
<b>TOTAL</b>	<b>938</b>	<b>6,568</b>	<b>26,274</b>	<b>315,282</b>	<b>271,544</b>	<b>16%</b>	<b>100%</b>		

TOTAL BIA MOVEMENTS (ARR & DEP)



TOTAL OVERFLYING MOVEMENTS

