

# Bahrain International Airport

Kingdom of Bahrain  
Civil Aviation Affairs  
Air Transport Directorate



## Flash Report (B)

BIA Movements & Overflying Summary - (JAN - DEC 2008)

BIA MOVEMENTS	Average Movements			CUM 2008	CUM 2007	Growth %	% MOV
	Category	Day	Week				
Passengers	228	1,595	6,380	76,562	61,323	25%	76%
Cargo	41	290	1,161	13,933	14,611	-5%	14%
Military	24	171	685	8,218	8,835	-7%	8%
Private	3	24	92	1,102	1,153	-4%	1%
Others	4	29	116	1,388	1,495	-7%	1%
<b>TOTAL</b>	<b>301</b>	<b>2,110</b>	<b>8,434</b>	<b>101,203</b>	<b>87,417</b>	<b>16%</b>	<b>100%</b>

Overflying MOVEMENTS	Average Movements			CUM 2008	CUM 2007	Growth %	% MOV
	Category	Day	Week				
Passengers	626	4,382	17,528	210,335	205,754	2%	60%
Cargo	32	225	901	10,812	11,901	-9%	3%
Military	181	1,267	5,067	60,804	60,520	0%	17%
Private	23	160	646	7,751	6,891	12%	2%
Others	183	1,278	5,112	61,341	30,214	103%	17%
<b>TOTAL</b>	<b>1,045</b>	<b>7,312</b>	<b>29,254</b>	<b>351,043</b>	<b>315,280</b>	<b>11%</b>	<b>100%</b>

TOTAL BIA MOVEMENTS (ARR & DEP)



TOTAL OVERFLYING MOVEMENTS



# Bahrain International Airport

Kingdom of Bahrain  
Civil Aviation Affairs  
Air Transport Directorate

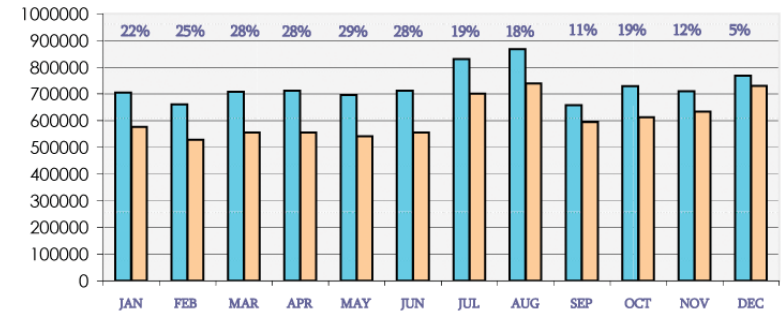


## Flash Report (A)

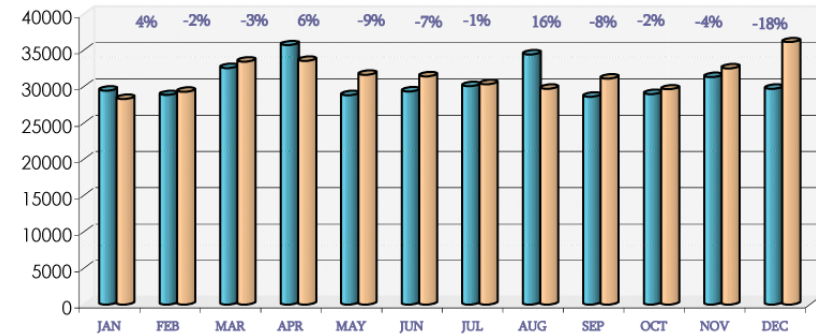
Traffic Statistics & Trends - (Jan - Dec) 2008

PASSENGERS						
BIA	DEC 08	DEC 07	%	CUM 2008	CUM 2007	%
Disembarked	364,934	338,920	8%	4,231,222	3,532,940	20%
Embarked	372,410	359,438	4%	4,180,220	3,450,689	21%
Transit	31,509	31,806	-1%	346,626	336,410	3%
<b>TOTAL</b>	<b>768,853</b>	<b>730,164</b>	<b>5%</b>	<b>8,758,068</b>	<b>7,320,039</b>	<b>20%</b>
IMMIGRATION						
	DEC 08	DEC 07	%	CUM 2008	CUM 2007	%
Arrivals	196,718	176,255	12%	2,218,513	1,966,922	13%
Departures	185,401	174,165	6%	1,948,344	1,714,688	14%
<b>TOTAL</b>	<b>382,119</b>	<b>350,420</b>	<b>9%</b>	<b>4,166,857</b>	<b>3,681,610</b>	<b>13%</b>
TRANSFER						
	DEC 08	DEC 07	%	CUM 2008	CUM 2007	%
<b>TOTAL</b>	<b>355,225</b>	<b>347,938</b>	<b>2%</b>	<b>4,244,585</b>	<b>3,302,019</b>	<b>29%</b>
CARGO & MAIL						
	DEC 08	DEC 07	%	CUM 2008	CUM 2007	%
<b>TOTAL</b>	<b>29,716</b>	<b>36,122</b>	<b>-18%</b>	<b>367,968</b>	<b>377,160</b>	<b>-2%</b>
AIRCRAFT MOVEMENTS						
BIA	DEC 08	DEC 07	%	CUM 2008	CUM 2007	%
Arrivals	4,496	4,157	8%	50,353	43,476	16%
Departures	4,543	4,204	8%	50,850	43,941	16%
<b>TOTAL</b>	<b>9,039</b>	<b>8,361</b>	<b>8%</b>	<b>101,203</b>	<b>87,417</b>	<b>16%</b>
OVERFLYING						
	DEC 08	DEC 07	%	CUM 2008	CUM 2007	%
<b>TOTAL</b>	<b>31,863</b>	<b>29,880</b>	<b>7%</b>	<b>351,043</b>	<b>315,280</b>	<b>11%</b>
FIR						
	DEC 08	DEC 07	%	CUM 2008	CUM 2007	%
<b>TOTAL</b>	<b>40,902</b>	<b>38,241</b>	<b>7%</b>	<b>452,246</b>	<b>402,697</b>	<b>12%</b>
BAFCO (GALLONS)						
COMPANY	DEC 08	DEC 07	%	CUM 2008	CUM 2007	%
Bapco	12,786,382	10,287,871	24%	129,604,137	109,761,035	18%
Chevron	6,260,694	6,353,687	-1%	62,588,695	59,011,342	6%
BP	2,746,836	2,224,216	23%	30,897,825	26,861,619	15%
<b>TOTAL</b>	<b>21,793,912</b>	<b>18,865,774</b>	<b>16%</b>	<b>223,090,657</b>	<b>195,633,996</b>	<b>14%</b>

TOTAL PASSENGERS AT BIA



TOTAL CARGO CARRIED VIA BIA



TOTAL BAFCO SALES IN GALLONS

