

# Bahrain International Airport

Kingdom of Bahrain  
Civil Aviation Affairs  
Air Transport Directorate



## Flash Report (A)

Traffic Statistics & Trends - (Jan - Jul) 2009

### PASSENGERS

BIA	JUL 09	JUL08	%	CUM 2009	CUM 2008	%
Disembarked	401,973	375,523	7%	2,423,012	2,393,533	1%
Embarked	482,979	428,105	13%	2,470,848	2,425,576	2%
Transit	24,878	27,305	-9%	182,179	204,740	-11%
<b>TOTAL</b>	<b>909,830</b>	<b>830,933</b>	<b>9%</b>	<b>5,076,039</b>	<b>5,023,849</b>	<b>1%</b>

### IMMIGRATION

	JUL 09	JUL08	%	CUM 2009	CUM 2008	%
Arrivals	196,086	189,127	4%	1,292,639	1,227,739	5%
Departures	254,696	218,896	16%	1,228,425	1,142,718	8%
<b>TOTAL</b>	<b>450,782</b>	<b>408,023</b>	<b>10%</b>	<b>2,521,064</b>	<b>2,370,457</b>	<b>6%</b>

### TRANSFER

	JUL 09	JUL08	%	CUM 2009	CUM 2008	%
<b>TOTAL</b>	<b>434,170</b>	<b>395,605</b>	<b>10%</b>	<b>2,372,796</b>	<b>2,448,652</b>	<b>-3%</b>

### CARGO & MAIL

	JUL 09	JUL08	%	CUM 2009	CUM 2008	%
<b>TOTAL</b>	<b>28,805</b>	<b>30,072</b>	<b>-4%</b>	<b>197,947</b>	<b>214,858</b>	<b>-8%</b>

### AIRCRAFT MOVEMENTS

BIA	JUL 09	JUL08	%	CUM 2009	CUM 2008	%
Arrivals	4,426	4,398	1%	29,142	29,047	0%
Departures	4,475	4,439	1%	29,439	29,355	0%
<b>TOTAL</b>	<b>8,901</b>	<b>8,837</b>	<b>1%</b>	<b>58,581</b>	<b>58,402</b>	<b>0%</b>

### OVERFLYING

	JUL 09	JUL08	%	CUM 2009	CUM 2008	%
<b>TOTAL</b>	<b>32,656</b>	<b>29,019</b>	<b>13%</b>	<b>216,438</b>	<b>200,894</b>	<b>8%</b>

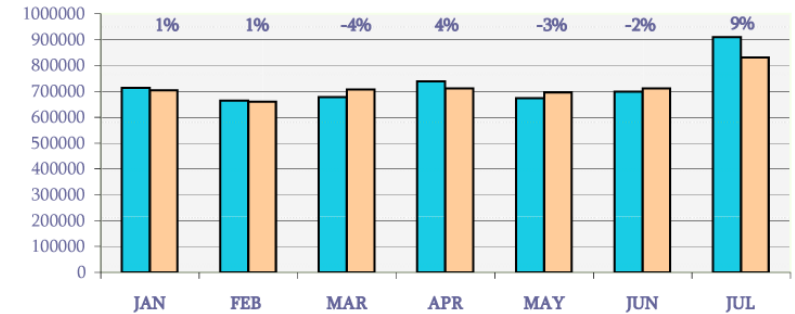
### FIR

	JUL 09	JUL08	%	CUM 2009	CUM 2008	%
<b>TOTAL</b>	<b>41,557</b>	<b>37,856</b>	<b>10%</b>	<b>275,019</b>	<b>259,296</b>	<b>6%</b>

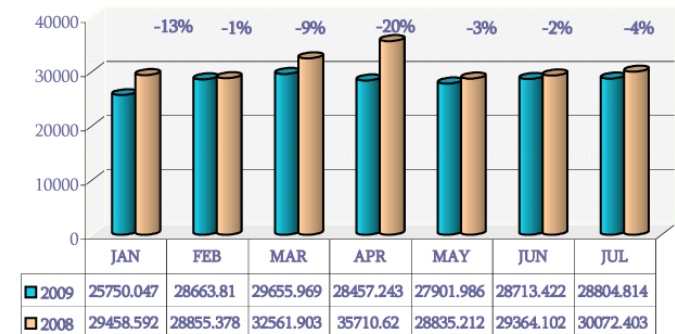
### BAFCO (GALLONS)

COMPANY	JUL 09	JUL08	%	CUM 2009	CUM 2008	%
Bapco	11,397,359	10,463,719	9%	71,229,784	69,953,597	2%
Chevron	3,249,758	5,091,894	-36%	32,595,127	35,008,245	-7%
BP	5,739,946	2,714,027	111%	21,171,547	16,396,105	29%
<b>TOTAL</b>	<b>20,387,063</b>	<b>18,269,640</b>	<b>12%</b>	<b>124,996,458</b>	<b>121,357,947</b>	<b>3%</b>

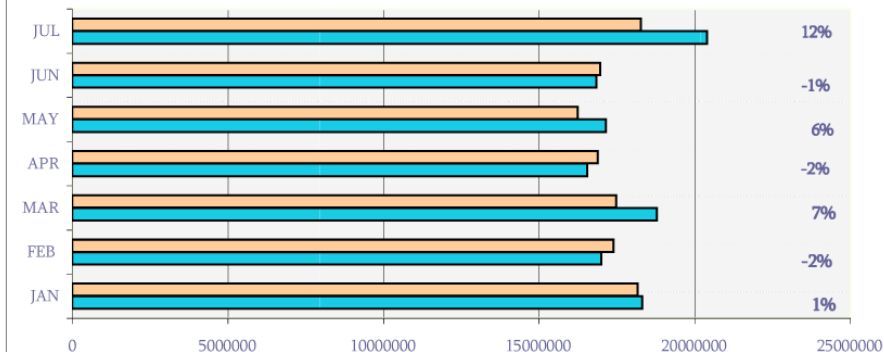
### TOTAL PASSENGERS AT BIA



### TOTAL CARGO CARRIED VIA BIA



### TOTAL BAFCO SALES IN GALLONS



# Bahrain International Airport

Kingdom of Bahrain  
Civil Aviation Affairs  
Air Transport Directorate



## Flash Report (B)

BIA Movements & Overflying Summary - (JAN - JUL 2009)

BIA MOVEMENTS	Average Movements						
Category	Day	Week	Month	CUM 2009	CUM 2008	Growth %	% MOV
Passengers	237	1,662	6,648	46,536	43,490	7%	79%
Cargo	33	232	928	6,493	8,467	-23%	11%
Military	22	157	629	4,403	4,732	-7%	8%
Private	2	12	47	327	861	-62%	1%
Others	4	29	117	822	852	-4%	1%
<b>TOTAL</b>	<b>299</b>	<b>2,092</b>	<b>8,369</b>	<b>58,581</b>	<b>58,402</b>	<b>0%</b>	<b>100%</b>
Overflying MOVEMENTS	Average Movements						
Category	Day	Week	Month	CUM 2009	CUM 2008	Growth %	% MOV
Passengers	630	4,410	17,641	123,488	120,639	2%	57%
Cargo	26	179	718	5,025	7,103	-29%	2%
Military	172	1,204	4,818	33,723	36,514	-8%	16%
Private	21	150	580	4,058	4,614	-12%	2%
Others	256	1,791	7,163	50,144	32,024	57%	23%
<b>TOTAL</b>	<b>1,105</b>	<b>7,735</b>	<b>30,920</b>	<b>216,438</b>	<b>200,894</b>	<b>8%</b>	<b>100%</b>

TOTAL BIA MOVEMENTS (ARR & DEP)



TOTAL OVERFLYING MOVEMENTS

