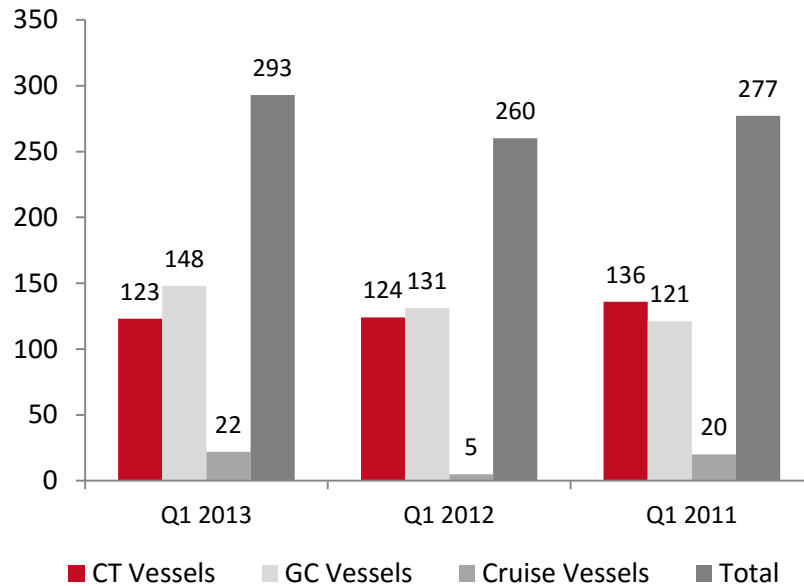


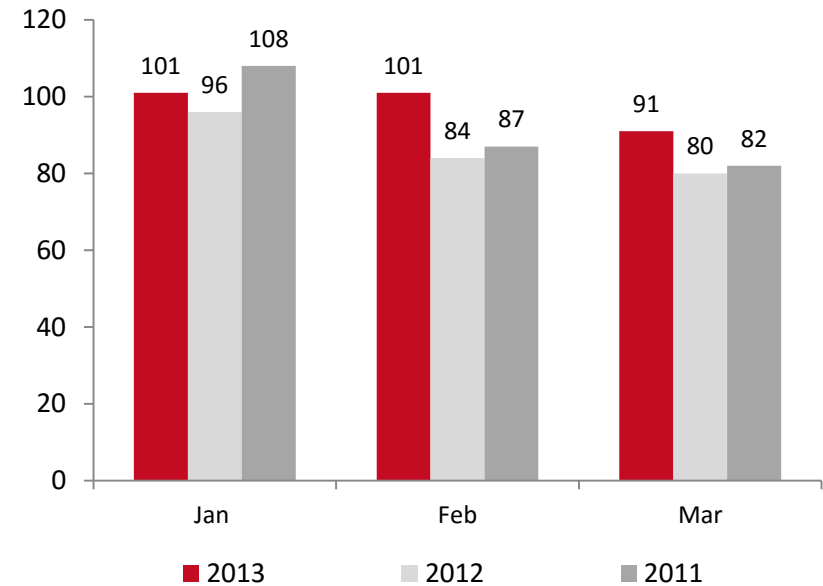
Vessel Movement

The number of container vessels in the first Quarter of 2013 has decreased to 123 vessels with a decrease of 1% when comparing to the first two quarters of 2012 and when comparing to 2011 the decline recording a 10% decrease in container vessels. The number of general cargo vessels in first quarter reflected differently, GC increased by 13% with 148 vessels calling KBSP when comparing with the first quarter of 2012. While as the cruise vessels calling KBSP for the first quarter of 2013 recorded 22 making an increase of 340 % cruise vessels when comparing with the year 2012.

Number of Vessels Calling at KBSP



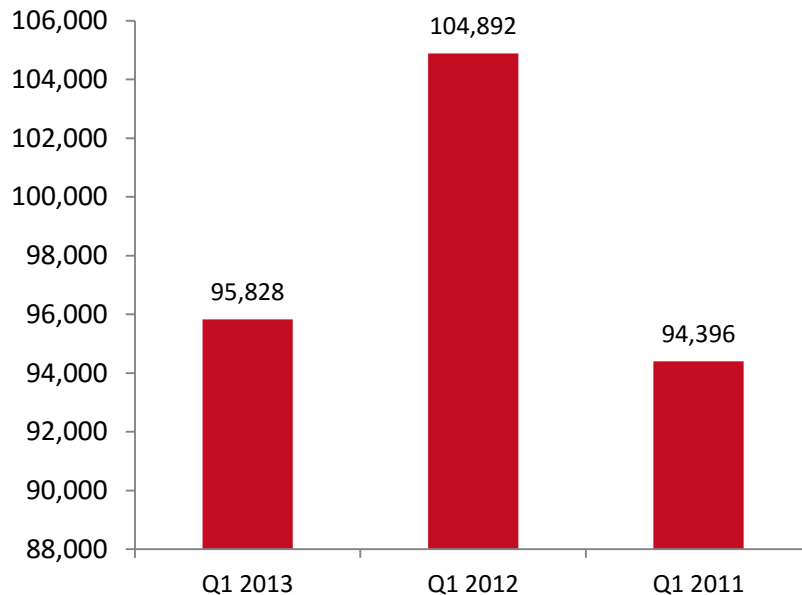
Monthly Total Vessels Berthed at KBSP



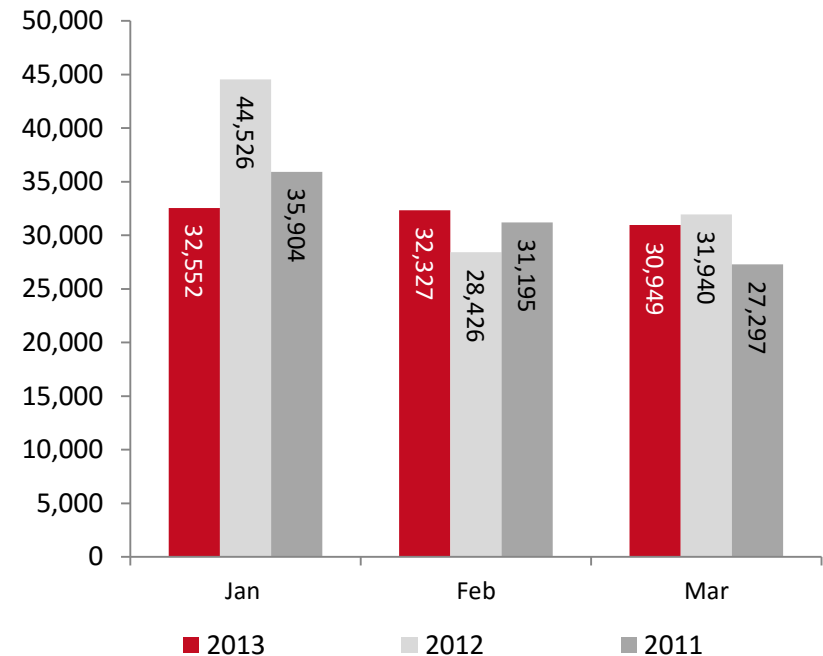
Container Throughput

The decrease in the number of container vessels berthing at KBSP in the first quarter of 2013 had an impact on the container throughput TEU, a decrease of 8.6% on the container throughput compared to the first quarter of 2012. Whereas, quarter one 2012 recorded the highest numbers of TEU's when comparing the year 2011 and 2013. Total container vessels continued decreasing recording a decrease of 1% for the month of March 2013 when comparing to the month of February for the same year the total Container vessels had reached to 30,949 CT in the month of March 2013 and when comparing to the month of January 2013 it had decrease to 5%.

Container Throughput (TEU)

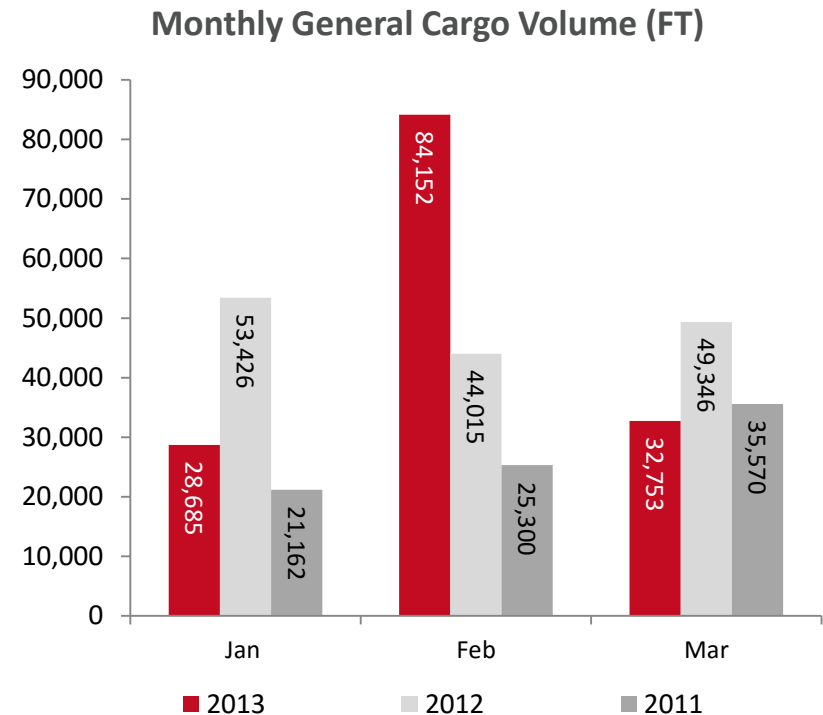
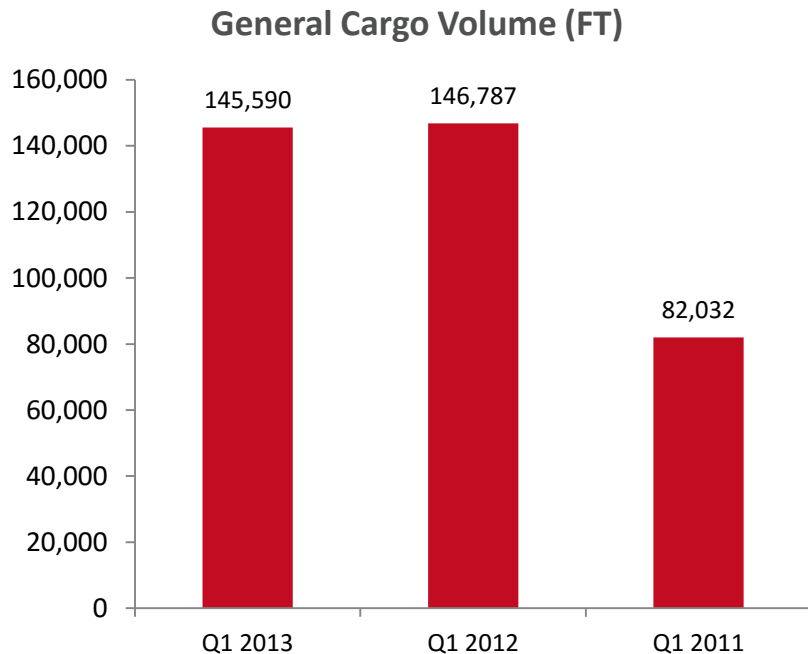


Monthly Container Throughput (TEU)



General Cargo Throughput

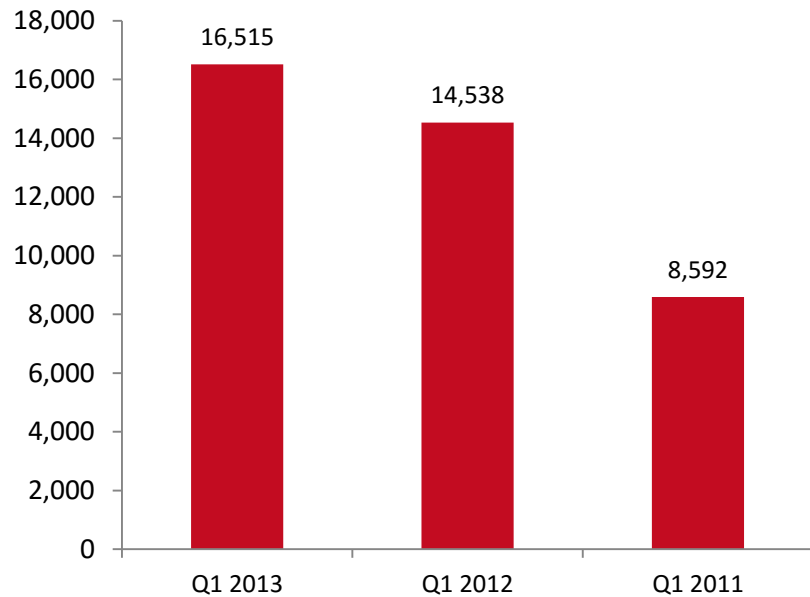
As there was a 13% increase in General Cargo vessels calling KBSP, the general cargo throughput in the first quarter 2013 had slightly decreased by 1% in comparison with quarter one 2012 recording 145,590 FT. While comparing between 2011, 2012 and 2013 for the first quarter the general cargo throughput in 2012 was the highest with 146,787 FT. General cargo freight tons numbers were fluctuating during the first quarter of the year 2013; month of February had recorded the highest reaching to 84,152 FT it's a 61% drop when comparing to month of March and month of January recorded the lowest reaching to 28,685 FT as it is a 14% increase when comparing to the month of March.



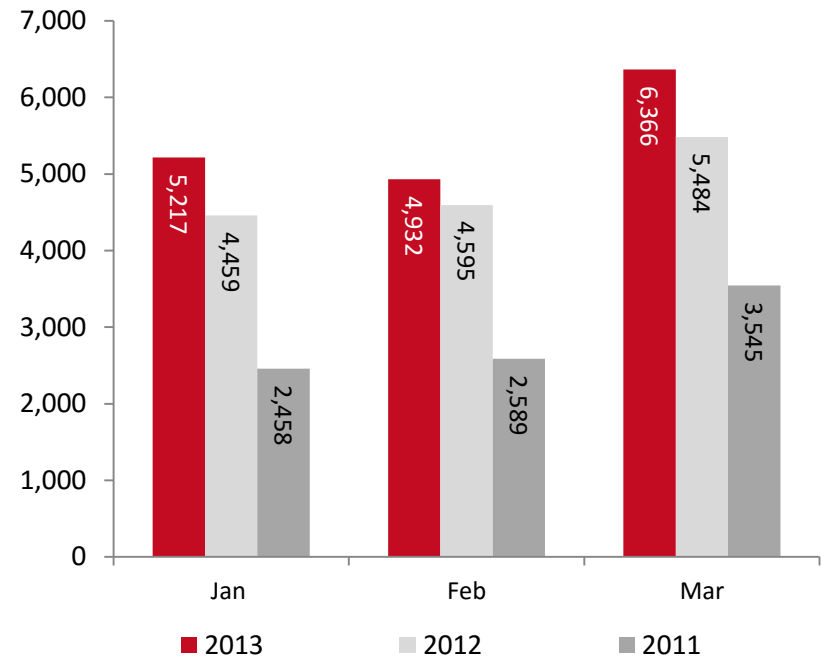
Vehicles

Cars imported to Bahrain via sea had continued increasing when comparing 2013 quarter one with the same period of the two previous years 2012 and 2011. Quarter one of 2013, 16,515 vehicles were imported which is a 14% increase comparing to the same period of 2012. In addition, comparing 2013 with 2011 there is a 92% increase.

Car Volume



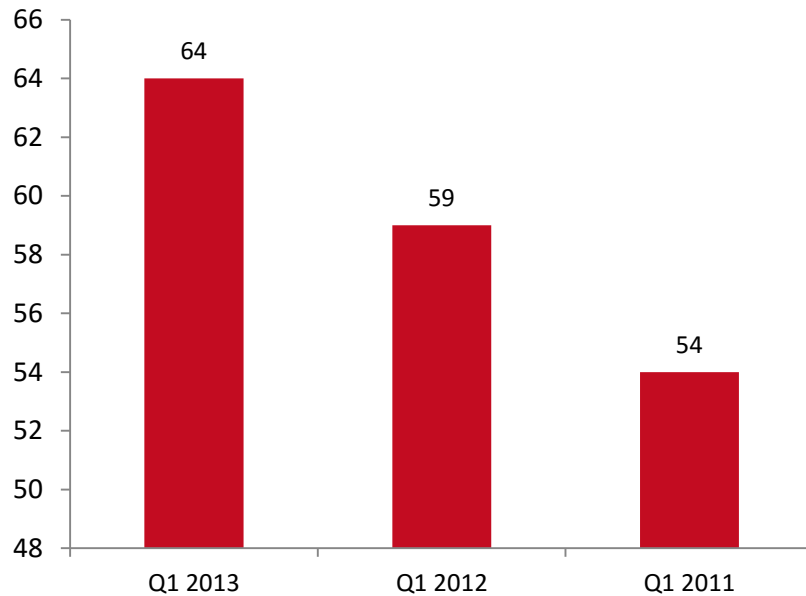
Monthly Car Volume



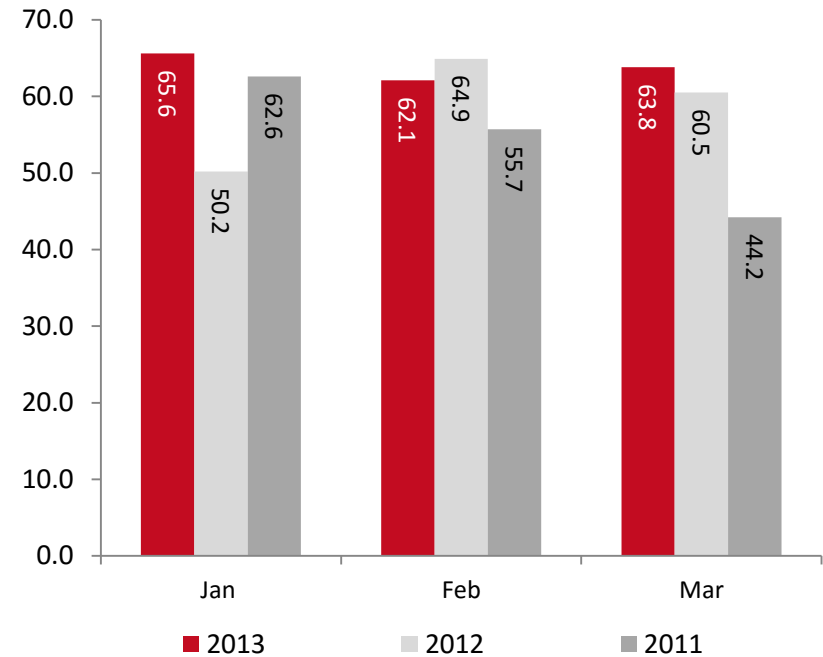
Berth Productivity

Comparing quarter one 2013, with the berth productivity for the same period of 2012 berth productivity continued improving and increased reaching to an average of 64 moves/hour making it an increase of 8%. Also, there was a 9% increase comparing the same period of 2011 with 2013.

Berth Productivity (Moves/Hour)



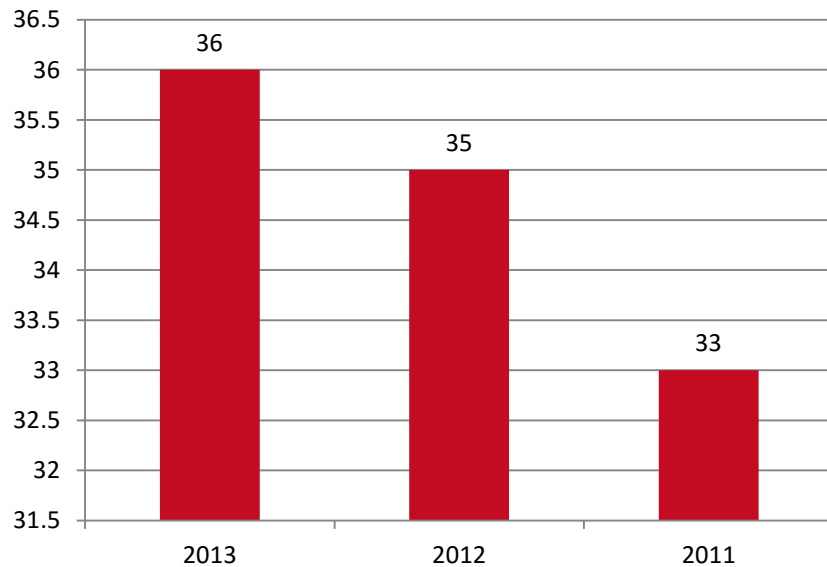
Monthly Berth Productivity (Moves/Hour)



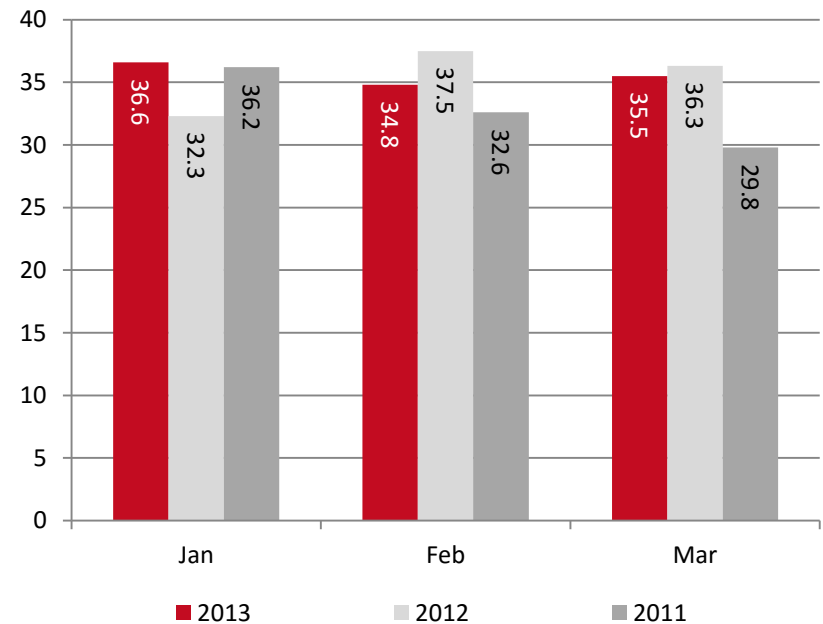
Gross Crane Productivity

Comparing with quarter one 2012, the gross crane productivity in quarter one 2013 had increased by 3% to an average of 36 moves per crane. Comparing GCP for quarter one 2011 with same period in 2013 there was an increase of 9%.

Gross Crane Productivity (Moves/Crane)



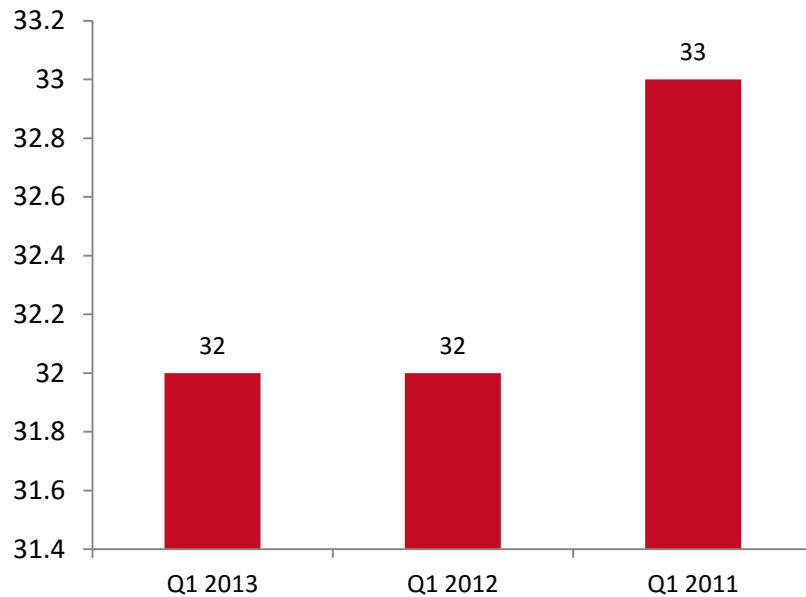
Monthly Crane Productivity (Moves/Crane)



Gate Turn Time

The gate turn time is constant and has been maintained within the range of 28-37 minutes. However, in the first quarter of 2013 the gate turn time reached to an average of 32 minutes.

Gate Turn Time (Minutes)



Monthly Gate Turn Time (Minutes)

