

# Bahrain International Airport

Kingdom of Bahrain  
Civil Aviation Affairs  
Air Transport Directorate

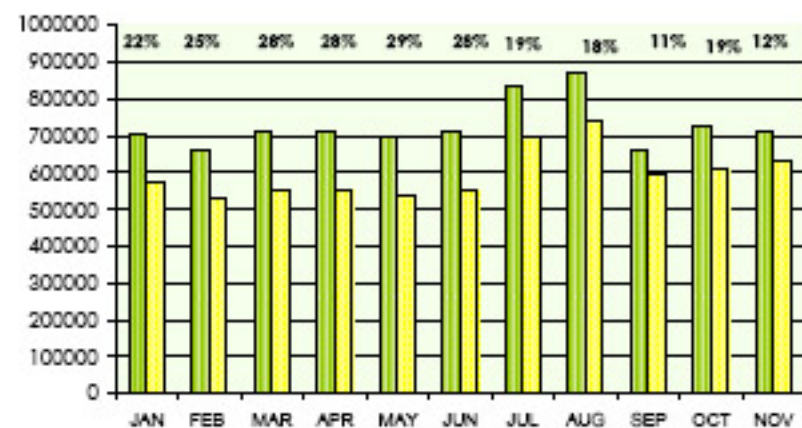


## Flash Report (A)

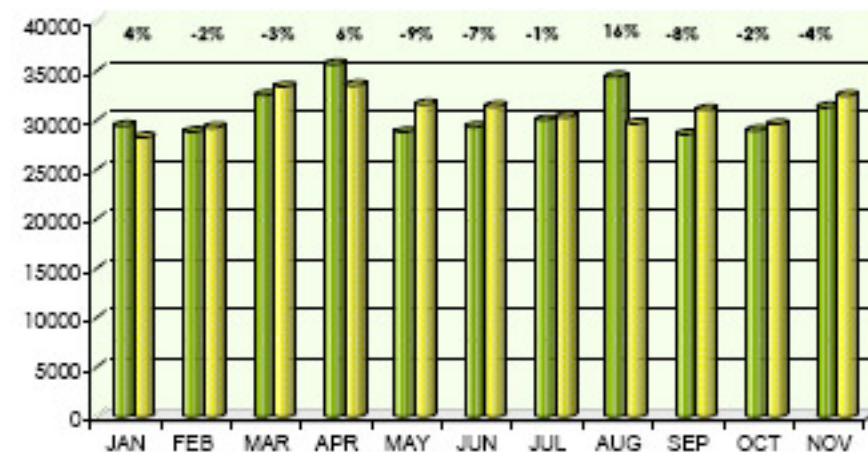
Traffic Statistics & Trends January - November 2008

PASSENGERS						
BIA	NOV 08	NOV 07	%	CUM 2008	CUM 2007	%
Disembarked	343,201	304,177	13%	3,866,133	3,194,020	21%
Embarked	338,492	303,688	11%	3,807,720	3,091,251	23%
Transit	28,717	26,968	6%	315,117	304,604	3%
<b>TOTAL</b>	<b>710,410</b>	<b>634,833</b>	<b>12%</b>	<b>7,988,970</b>	<b>6,589,875</b>	<b>21%</b>
IMMIGRATION						
	NOV 08	NOV 07	%	CUM 2008	CUM 2007	%
Arrivals	177,052	156,445	13%	2,021,795	1,790,667	13%
Departures	153,679	138,508	11%	1,762,943	1,540,523	14%
<b>TOTAL</b>	<b>330,731</b>	<b>294,953</b>	<b>12%</b>	<b>3,784,738</b>	<b>3,331,190</b>	<b>14%</b>
TRANSFER						
	NOV 08	NOV 07	%	CUM 2008	CUM 2007	%
<b>TOTAL</b>	<b>350,962</b>	<b>312,912</b>	<b>12%</b>	<b>3,889,115</b>	<b>2,954,081</b>	<b>32%</b>
CARGO & MAIL (TONNES)						
	NOV 08	NOV 07	%	CUM 2008	CUM 2007	%
<b>TOTAL</b>	<b>31,341</b>	<b>32,536</b>	<b>-4%</b>	<b>338,252</b>	<b>341,038</b>	<b>-1%</b>
AIRCRAFT MOVEMENTS						
BIA	NOV 08	NOV 07	%	CUM 2008	CUM 2007	%
Arrivals	4,176	3,850	8%	45,857	39,319	17%
Departures	4,216	3,894	8%	46,307	39,737	17%
<b>TOTAL</b>	<b>8,392</b>	<b>7,744</b>	<b>8%</b>	<b>92,164</b>	<b>79,056</b>	<b>17%</b>
OVERFLYING						
	NOV 08	NOV 07	%	CUM 2008	CUM 2007	%
<b>TOTAL</b>	<b>31,834</b>	<b>28,237</b>	<b>13%</b>	<b>319,180</b>	<b>285,400</b>	<b>12%</b>
FIR						
	NOV 08	NOV 07	%	CUM 2008	CUM 2007	%
<b>TOTAL</b>	<b>40,226</b>	<b>35,981</b>	<b>12%</b>	<b>411,344</b>	<b>364,456</b>	<b>13%</b>
BAFCO (GALLONS)						
COMPANY	NOV 08	NOV 07	%	CUM 2008	CUM 2007	%
Bapco	11,525,635	9,714,087	19%	116,817,755	98,767,799	18%
Chevron	5,344,841	5,975,192	-11%	56,328,001	52,397,349	8%
BP	2,857,898	2,072,150	38%	28,150,989	24,110,260	17%
<b>TOTAL</b>	<b>19,728,374</b>	<b>17,761,429</b>	<b>11%</b>	<b>201,296,745</b>	<b>175,275,408</b>	<b>15%</b>

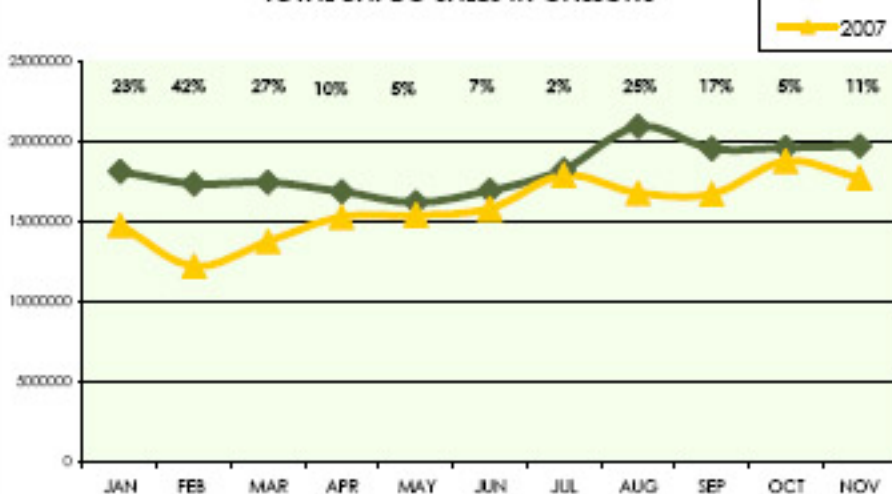
TOTAL PASSENGERS AT BIA



TOTAL CARGO CARRIED VIA BIA



TOTAL BAFCO SALES IN GALLONS





# Flash Report (B)

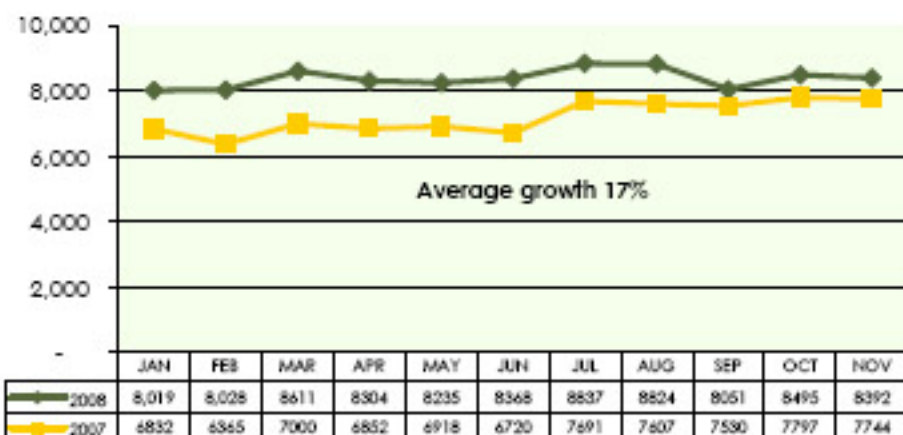
## BIA Movements & Overflying Summary - (JAN - NOV 2008)

BIA MOVEMENTS	Average Movements						
Category	Day	Week	Month	CUM 2008	CUM 2007	Growth %	% MOV
Passengers	226	1,581	6,325	69,570	55,486	25%	75%
Cargo	41	290	1,158	12,742	12,987	-2%	14%
Military	24	171	685	7,530	8,181	-8%	8%
Private	3	24	97	1,063	1,032	3%	1%
Others	4	29	114	1,259	1,370	-8%	1%
<b>TOTAL</b>	<b>299</b>	<b>2,095</b>	<b>8,379</b>	<b>92,164</b>	<b>79,056</b>	<b>17%</b>	<b>100%</b>

Overflying MOVEMENTS	Average Movements						
Category	Day	Week	Month	CUM 2008	CUM 2007	Growth %	% MOV
Passengers	620	4,338	17,353	190,883	186,334	2%	60%
Cargo	33	229	916	10,079	10,690	-6%	3%
Military	183	1,280	5,120	56,315	55,835	1%	18%
Private	23	160	647	7,114	6,273	13%	2%
Others	178	1,245	4,981	54,789	26,268	109%	17%
<b>TOTAL</b>	<b>1,036</b>	<b>7,252</b>	<b>29,016</b>	<b>319,180</b>	<b>285,400</b>	<b>12%</b>	<b>100%</b>

TOTAL BIA MOVEMENTS (ARR & DEP)



TOTAL OVERFLYING MOVEMENTS

