

# Bahrain International Airport

Kingdom of Bahrain  
Civil Aviation Affairs  
Air Transport Directorate



## Flash Report (A)

Traffic Statistics & Trends - (Jan - Oct) 2009

### PASSENGERS

BIA	OCT 09	OCT 08	%	CUM 2009	CUM 2008	%
Disembarked	375,861	366,277	3%	3,609,552	3,523,087	2%
Embarked	348,668	335,693	4%	3,567,770	3,469,318	3%
Transit	22,872	27,165	-16%	252,006	286,400	-12%
<b>TOTAL</b>	<b>747,401</b>	<b>729,135</b>	<b>3%</b>	<b>7,429,328</b>	<b>7,278,805</b>	<b>2%</b>

IMMIGRATION	OCT 09	OCT 08	%	CUM 2009	CUM 2008	%
Arrivals	206,775	204,647	1%	1,926,497	1,844,743	4%
Departures	164,731	158,582	4%	1,717,462	1,609,264	7%
<b>TOTAL</b>	<b>371,506</b>	<b>363,229</b>	<b>2%</b>	<b>3,643,959</b>	<b>3,454,007</b>	<b>5%</b>

TRANSFER	OCT 09	OCT 08	%	CUM 2009	CUM 2008	%
<b>TOTAL</b>	<b>353,023</b>	<b>338,741</b>	<b>4%</b>	<b>3,533,363</b>	<b>3,538,398</b>	<b>0%</b>

### CARGO & MAIL

	OCT 09	OCT 08	%	CUM 2009	CUM 2008	%
<b>TOTAL</b>	<b>27,896</b>	<b>28,992</b>	<b>-4%</b>	<b>281,993</b>	<b>306,911</b>	<b>-8%</b>

### AIRCRAFT MOVEMENTS

BIA	OCT 09	OCT 08	%	CUM 2009	CUM 2008	%
Arrivals	4,424	4,231	5%	42,213	41,681	1%
Departures	4,468	4,264	5%	42,645	42,091	1%
<b>TOTAL</b>	<b>8,892</b>	<b>8,495</b>	<b>5%</b>	<b>84,858</b>	<b>83,772</b>	<b>1%</b>

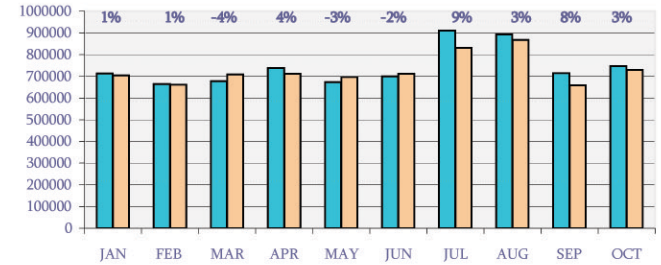
OVERFLYING	OCT 09	OCT 08	%	CUM 2009	CUM 2008	%
<b>TOTAL</b>	<b>33,601</b>	<b>29,148</b>	<b>15%</b>	<b>313,436</b>	<b>287,346</b>	<b>9%</b>

FIR	OCT 09	OCT 08	%	CUM 2009	CUM 2008	%
<b>TOTAL</b>	<b>42,493</b>	<b>37,643</b>	<b>13%</b>	<b>398,294</b>	<b>371,118</b>	<b>7%</b>

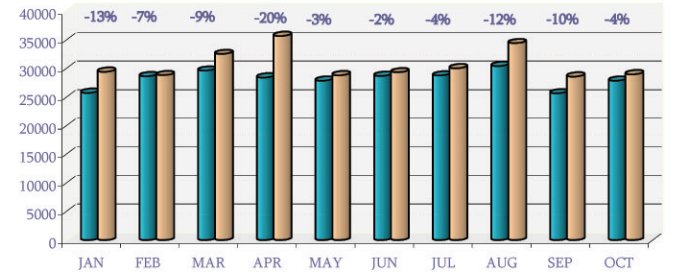
### BAFCO (GALLONS)

COMPANY	OCT 09	OCT 08	%	CUM 2009	CUM 2008	%
Bapco	10,859,488	11,761,172	-8%	104,205,660	105,292,120	-1%
Chevron	5,586,339	5,106,116	9%	49,155,179	50,983,160	-4%
BP	2,722,485	2,793,016	-3%	29,625,746	25,293,091	17%
<b>TOTAL</b>	<b>19,168,312</b>	<b>19,660,304</b>	<b>-3%</b>	<b>182,986,585</b>	<b>181,568,371</b>	<b>1%</b>

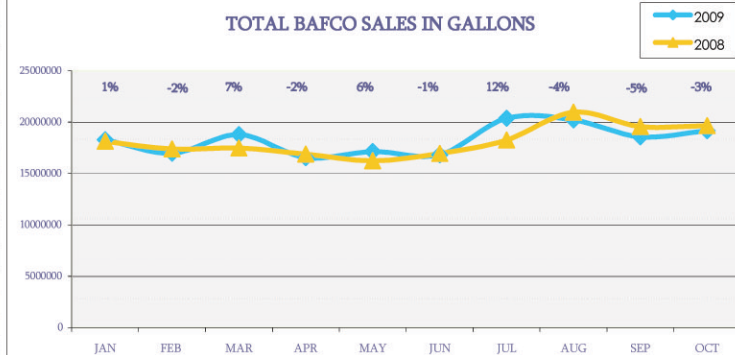
### TOTAL PASSENGERS AT BIA



### TOTAL CARGO CARRIED VIA BIA



### TOTAL BAFCO SALES IN GALLONS



# Bahrain International Airport

Kingdom of Bahrain  
Civil Aviation Affairs  
Air Transport Directorate



## Flash Report (B)

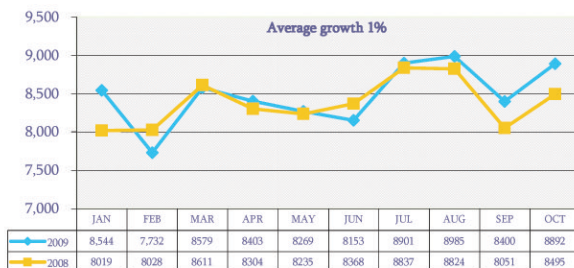
BIA Movements & Overflying Summary - (JAN - OCT 2009)

BIA MOVEMENTS		Average Movements					
Category	Day	Week	Month	CUM 2009	CUM 2008	Growth %	% MOV
Passengers	242	1,693	6,774	67,735	63,142	7%	80%
Cargo	33	229	916	9,162	11,690	-22%	11%
Military	23	159	637	6,373	6,791	-6%	8%
Private	2	11	42	420	1,006	-58%	0%
Others	4	29	117	1,168	1,143	2%	1%
<b>TOTAL</b>	<b>303</b>	<b>2,121</b>	<b>8,486</b>	<b>84,858</b>	<b>83,772</b>	<b>1%</b>	<b>100%</b>

Overflying MOVEMENTS		Average Movements					
Category	Day	Week	Month	CUM 2009	CUM 2008	Growth %	% MOV
Passengers	635	4,448	17,792	177,924	171,795	4%	57%
Cargo	25	177	709	7,090	9,287	-24%	2%
Military	172	1,202	4,808	48,080	51,692	-7%	15%
Private	19	135	542	5,417	6,341	-15%	2%
Others	268	1,873	7,493	74,925	48,231	55%	24%
<b>TOTAL</b>	<b>1,119</b>	<b>7,836</b>	<b>31,344</b>	<b>313,436</b>	<b>287,346</b>	<b>9%</b>	<b>100%</b>

TOTAL BIA MOVEMENTS (ARR & DEP)



TOTAL OVERFLYING MOVEMENTS

