

Taking Aviation to Global Standards.



Civil Aviation Affairs  
Kingdom of Bahrain

Annual Statistics Report 2009





**H.R.H. Prince Khalifa bin Salman Al Khalifa**  
The Prime Minister of the Kingdom of Bahrain



**His Majesty Hamad bin Isa Al Khalifa**  
King of the Kingdom of Bahrain



**H.R.H. Prince Shaikh Salman bin Hamad Al Khalifa**  
The Crown Prince and  
Deputy Supreme Commander of the Bahrain Defence Force  
Kingdom of Bahrain



# EXECUTIVE SUMMARY



Over 9 million passengers travelled through Bahrain International Airport in 2009, an increase of 3% over the previous year's record increase and a satisfactory improvement given the global recession. The average growth over the period 2000-2009 was 10%.

Arriving and departing passengers both recorded small increases 2% and 3% respectively reflecting the overall small improvement. Transfer passengers reached 4,296,413, a marginal increase of 1% whilst transit passengers declined to 316,657. Key factors were the performance of Gulf Air hub operations and the continued expansion of Bahrain Air services.

Total cargo handled through the airport at 311,024 tonnes reflected the overall world downturn in air freight movements due to the recession, 7% lower than in 2008 whilst mail at 31,710 tonnes was also significantly lower by 16% over 2008. Discharged cargo at 174,483 tonnes was down by 7% whilst cargo uplifted was also down by 7% to 136,541 tonnes, mirroring the overall decline. The outlook for 2010 looks much more encouraging as major economies come out of recession with increased opportunities for growth in the Middle East.

Intra GCC, Middle East, Indian Subcontinent and Far East routes continued to provide the strongest growth with Dubai providing the largest volume at 1,067,013 passengers. Traffic to Kuwait grew by 24% and to Muscat by 41% reflecting the increase in frequencies and operations by low cost carriers. Passengers carried by Bahrain Air increased by 71%, Al Jazeera by 37% whilst

Oman Air passengers increased by 86% .

Gulf Air carried 5,752,216 passengers, 64% of the total traffic through the airport and Bahrain Air carried 690,477 passengers, 8% of the total.

Aircraft movements at the airport reached 103,727, 2% above 2008 and have grown by an average of 6% per year since 2000.

Fuel uplift by airlines declined marginally in 2009 to 221,724,888 U.S. gallons as against 223,090,657 in 2008 resulting in a reduction in the average annual growth to 7% over the period since 2000.

The outlook for 2010 is encouraging with the gradual improvement of traffic as global economies begin to emerge from the world recession and the Middle East Region in particular looks to benefit from increased investment and business activity.

I should like to express my sincere thanks to His Excellency Sheikh Ali bin Khalifa Al Khalifa, Deputy Prime Minister for his guidance and support during the year. I should also like to extend my gratitude to all those involved with Civil Aviation Affairs and the various agencies and organisations at Bahrain International Airport for their valued contribution to this performance which has been achieved under very difficult economic circumstances.

**Capt. AbdulRahman Mohamed Al Gaoud**  
UNDERSECRETARY  
FOR CIVIL AVIATION AFFAIRS



# DEFINITIONS

## PASSENGERS

### **Arriving Passengers (Arrivals)**

All passengers who land at an airport and pass through immigration.

### **Departing Passengers (Departures)**

All passengers who pass through immigration prior to departure from the airport.

### **Disembarking Passengers**

All passengers who disembark from an aircraft including transfer passengers but excluding transit.

### **Embarking Passengers**

All passengers who board an aircraft including those who have transferred from other aircraft, but excluding transit.

### **Transfer Passengers**

Passengers flying into and out of an airport on different aircraft, or on the same aircraft bearing different flight numbers, and whose main purpose for using the airport was to effect a transfer.

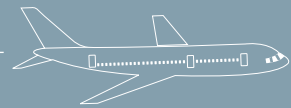
### **Direct Transit Passengers**

Passengers stopping temporarily at the designated airport and departing on the same aircraft in which they arrived bearing the same aircraft registration and flight number.

### **Total Passengers**

All passengers – arrivals/departures/transit/transfer i.e. all disembarking/embarking and transit.





## FREIGHT

### Mail

Is the weight of letter mail carried.

### Cargo

Is a flight carrying solely freight and/or mail and associated cargo attendants.

## MOVEMENTS

### Aircraft Movements

An aircraft take-off or landing at an airport. For airport traffic purposes one arrival and one departure are counted as two movements.

### Commercial Movements

Landings or take-offs of aircraft engaged on the transport of passengers, cargo or mail on commercial terms.

### Military Movements

Movements exclusively for military purposes using military aircraft.

### Private Movements

Movements for purely non-commercial purposes by private owners or other private aircraft operators.

## SOURCES

- Air Transport Directorate, Civil Aviation Affairs (CAA)
- Traffic Department, Bahrain Airport Services Company (BAS)
- Statistics Department, Ministry of Interior (IMMG)
- Administration & Accounts, Bahrain Aviation Fueling Company (BAFCO)
- Operations Support Department, DHL Eastern Europe, Middle East & Africa Aviation (DHL)





# R E F E R E N C E S

**Air Transport Directorate**

Tel (00973) 17 32 11 69 / 90 11

Fax (00973) 17 33 32 78

Email [ealsamalan@caa.gov.bh](mailto:ealsamalan@caa.gov.bh)

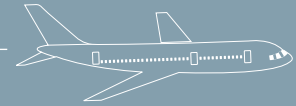
**Marketing & Promotion Directorate**

Tel (00973) 17 32 91 95

Fax (00973) 17 32 11 39

Email [smehdi@caa.gov.bh](mailto:smehdi@caa.gov.bh)





# CONTENTS

## Traffic Statistics

- 010 Airport Traffic Summary By Month 2009
- 012 Airport Traffic Statistics 2000-2009
- 014 Airport Traffic Statistics & Trends 2000-2009
- 016 Aviation Fuel Uplifted Summary 2008-2009

## Passenger Movements

- 020 Comparison of Total Passenger Traffic 2000-2009
- 022 Top 25 Destinations 2008-2009
- 024 Total Passengers by Region 2009
- 025 Summary of Embarked/Disembarked Passengers by Region 2008-2009
- 026 Total Passengers by Airline and Destination 2008-2009

## Airline Performance

- 038 Total Traffic by Airline 2008-2009
- 040 Top 10 Passenger Airlines 2009

## Aircraft Movements

- 044 Total Aircraft Movements 2000-2009
- 045 Aircraft Movements by Type 2004-2009
- 046 Movements by Aircraft Type 2009

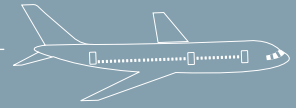
## Cargo & Mail

- 052 Total Cargo Throughput by Airline 2009
- 055 Total Mail Throughput by Airline 2009
- 056 Top 10 Airlines and Total Cargo & Mail Throughput 2009

## Immigration Statistics

- 060 Total Passengers Through Immigration by Nationality 2008-2009
- 062 Total Passengers Through Immigration by Country 2008-2009





# TRAFFIC STATISTICS

- Airport Traffic Summary By Month 2009
- Airport Traffic Statistics 2000-2009
- Airport Traffic Statistics & Trends 2000-2009
- Aviation Fuel Uplifted Summary 2008-2009





## TRAFFIC STATISTICS SUMMARY

Passenger traffic through Bahrain International Airport exceeded 9 million for the first time in 2009, an increase of 3% over the very dramatic growth of 2008 and a fair achievement given the effects of the global recession. Arriving and departing passengers both recorded small increases 2% and 3% respectively whilst transfer passengers grew marginally by 1%. Average growth over the past ten years continued at 10%.

The number of arriving & departing aircraft also grew by 2% in line with the small increase in passenger numbers. Aircraft movements have grown on average by 6% over the ten year period since 2000.

Aircraft flying through the Bahrain Flight Information Region (F.I.R.) continued to grow although at a lower rate of increase than in previous years. 487,409 aircraft movements, an increase of 6%, were handled in 2009.

Air cargo shipments continued to decline during the year as the industry continued to severely suffer from the world downturn in trade. Total cargo handled through the airport at 311,024 tonnes was 7% lower than in 2008, whilst mail shipments at 31,710 tonnes was also lower by 16%. Over the ten year period, air cargo tonnage has recorded an average growth of 9% with mail recording a 27% average growth over the same period.

221,724,888 U.S. gallons of fuel were uplifted at Bahrain International Airport during 2009, marginally less, by 1%, than in 2008. Average growth of fuel uplift over the past decade also reduced marginally to 7%





## TRAFFIC STATISTICS

### Airport Traffic Summary by Month 2009

	JAN.	FEB.	MAR.	APR.	MAY.	JUN.	JUL.
<b>Aircraft Movements</b>							
Arrivals	4,252	3,848	4,269	4,178	4,114	4,055	4,426
Departures	4,292	3,884	4,310	4,225	4,155	4,098	4,475
<b>Total</b>	<b>8,544</b>	<b>7,732</b>	<b>8,579</b>	<b>8,403</b>	<b>8,269</b>	<b>8,153</b>	<b>8,901</b>
<b>F.I.R. Movements</b>	39,647	35,201	39,360	39,614	40,482	39,158	41,557
<b>Fuel (000'S USG)</b>	18,310	16,990	18,784	16,541	17,146	16,837	20,387
<b>Passenger Traffic Through Airport</b>							
Disembarking	350,875	325,395	329,993	353,977	330,977	329,822	401,973
Embarking	330,595	312,556	322,281	357,377	318,696	346,364	482,979
Transit	31,644	26,246	25,316	27,017	23,998	23,080	24,878
<b>Total</b>	<b>713,114</b>	<b>664,197</b>	<b>677,590</b>	<b>738,371</b>	<b>673,671</b>	<b>699,266</b>	<b>909,830</b>
<b>Through Immigration</b>							
Arrivals	180,162	187,737	182,387	195,149	183,863	167,255	196,086
Departures	145,409	161,420	159,775	179,845	154,439	172,841	254,696
<b>Total</b>	<b>325,571</b>	<b>349,157</b>	<b>342,162</b>	<b>374,994</b>	<b>338,302</b>	<b>340,096</b>	<b>450,782</b>
<b>Transfers</b>	355,899	288,794	310,112	336,360	311,371	336,090	434,170
<b>*Cargo (Tonnes)</b>							
Discharged	13,411	15,906	15,349	14,675	14,433	14,818	14,470
Uplifted	9,640	10,364	11,550	11,108	10,518	11,079	11,538
<b>Total</b>	<b>23,051</b>	<b>26,270</b>	<b>26,900</b>	<b>25,783</b>	<b>24,950</b>	<b>25,897</b>	<b>26,008</b>
<b>**Transshipment (Cargo)</b>	4,063	4,269	5,179	4,233	4,661	5,177	5,234
<b>**Transshipment (Mail)</b>	53	49	56	42	30	26	25
<b>*Mail (Tonnes)</b>							
Discharged	970	888	998	936	958	1,015	1,008
Uplifted	1,729	1,506	1,758	1,738	1,994	1,801	1,789
<b>Total</b>	<b>2,699</b>	<b>2,394</b>	<b>2,756</b>	<b>2,674</b>	<b>2,952</b>	<b>2,816</b>	<b>2,797</b>

Source: CAA, BAS, IMMG, BAFCO & DHL

\* Cargo & Mail includes DHL figures.

\*\* Cargo & Mail Transshipment do not include DHL figures.



AUG.	SEP.	OCT.	NOV.	DEC.	TOTAL 09	TOTAL 08	% CHANGE
4,469	4,178	4,424	4,567	4,822	51,602	50,353	2%
4,516	4,222	4,468	4,611	4,869	52,125	50,850	3%
<b>8,985</b>	<b>8,400</b>	<b>8,892</b>	<b>9,178</b>	<b>9,691</b>	<b>103,727</b>	<b>101,203</b>	<b>2%</b>
41,748	39,034	42,493	43,712	45,403	487,409	452,246	8%
20,231	18,591	19,168	18,527	20,211	221,725	223,091	-1%
455,213	355,466	375,861	365,628	405,531	4,380,711	4,231,222	4%
411,624	336,630	348,668	403,375	385,118	4,356,263	4,180,220	4%
24,982	21,973	22,872	30,877	33,774	316,657	346,626	-9%
<b>891,819</b>	<b>714,069</b>	<b>747,401</b>	<b>799,880</b>	<b>824,423</b>	<b>9,053,631</b>	<b>8,758,068</b>	<b>3%</b>
239,214	187,869	206,775	192,168	219,072	2,337,737	2,218,536	5%
174,108	150,198	164,731	204,946	180,416	2,102,824	1,948,335	8%
<b>413,322</b>	<b>338,067</b>	<b>371,506</b>	<b>397,114</b>	<b>399,488</b>	<b>4,440,561</b>	<b>4,166,871</b>	<b>7%</b>
453,515	354,029	353,023	371,889	391,161	4,296,413	4,244,571	1%
15,651	13,426	14,358	14,650	13,336	174,483	186,646	-7%
12,018	10,198	11,098	13,142	14,289	136,541	146,152	-7%
<b>27,668</b>	<b>23,624</b>	<b>25,456</b>	<b>27,792</b>	<b>27,625</b>	<b>311,024</b>	<b>332,798</b>	<b>-7%</b>
5,749	4,850	5,620	6,093	5,611	60,738	61,213	-1%
20	24	33	30	38	427	979	-56%
1,016	669	720	879	977	11,033	12,898	-14%
1,786	1,388	1,720	1,832	1,636	20,677	25,011	-17%
<b>2,802</b>	<b>2,056</b>	<b>2,440</b>	<b>2,711</b>	<b>2,613</b>	<b>31,710</b>	<b>37,909</b>	<b>-16%</b>



# TRAFFIC STATISTICS

## Airport Traffic Statistics & Trends 2000-2009

	2000	2001	2002	2003	2004
<b>Total Passenger Movements</b>	3,930,585	3,991,623	4,147,105	4,296,979	5,144,290
Growth	15.02%	1.55%	3.90%	3.61%	19.72%
<b>Total Aircraft Movements</b>	60,072	60,490	61,965	69,493	72,530
Growth	9.69%	0.70%	2.44%	12.15%	4.37%
<b>Total Cargo (Tonnes)</b>	146,794	152,433	176,112	231,239	290,091
Growth	15.99%	3.84%	15.53%	31.30%	25.45%
<b>Total Mail (Tonnes)</b>	3,704	4,388	4,570	6,434	11,815
Growth	33.19%	18.47%	4.15%	40.79%	83.63%
<b>Total F.I.R Movements</b>	199,582	218,112	235,135	278,603	292,265
Growth	8.77%	9.28%	7.80%	18.49%	4.90%
<b>Total Fuel Uplifted (000'S Usg)</b>	117,747	125,925	137,734	153,835	170,361
Growth	6.90%	6.95%	9.38%	11.69%	10.74%

Source: CAA , BAS , DHL & BAFCO



2005	2006	2007	2008	2009	Average Growth %
5,581,503	6,696,025	7,320,039	8,758,068	9,053,631	
8.50%	19.97%	9.32%	19.65%	3.37%	10%
73,891	80,538	87,417	101,203	103,727	
1.88%	9.00%	8.54%	15.77%	2.49%	6%
316,890	315,237	341,630	332,798	311,024	
9.24%	-0.52%	8.37%	-2.59%	-6.54%	9%
17,942	42,040	43,648	37,024	31,710	
51.86%	134.31%	3.83%	-15.18%	-14.35%	27%
319,948	352,078	402,697	452,246	487,409	
9.47%	10.04%	14.38%	12.30%	7.78%	10%
181,926	195,726	195,634	223,091	221,725	
6.79%	7.59%	-0.05%	14.03%	-0.61%	7%

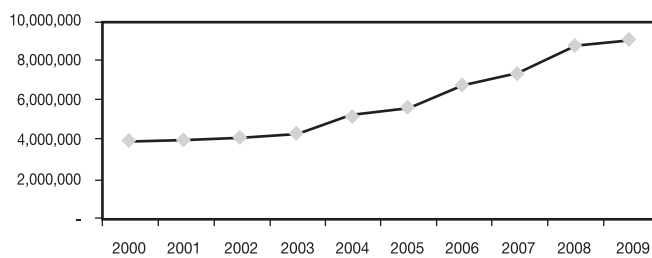




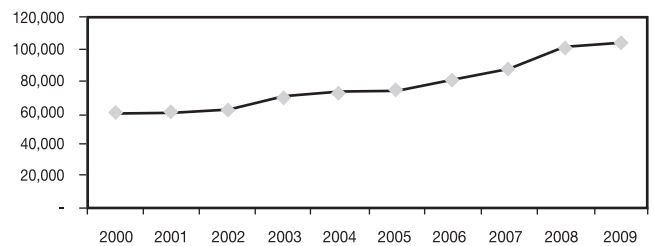
# TRAFFIC STATISTICS

## Airport Traffic Statistics & Trends 2000-2009

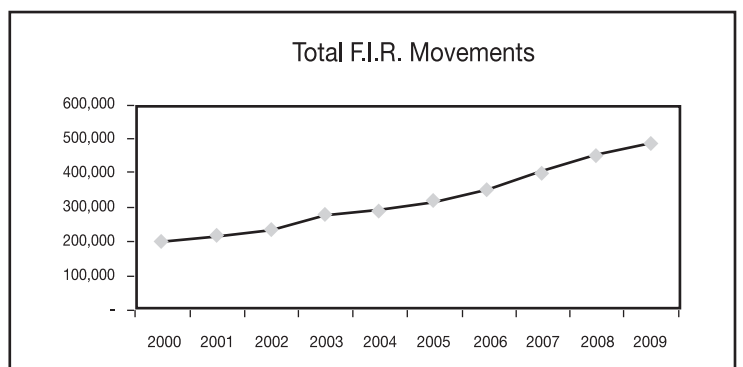
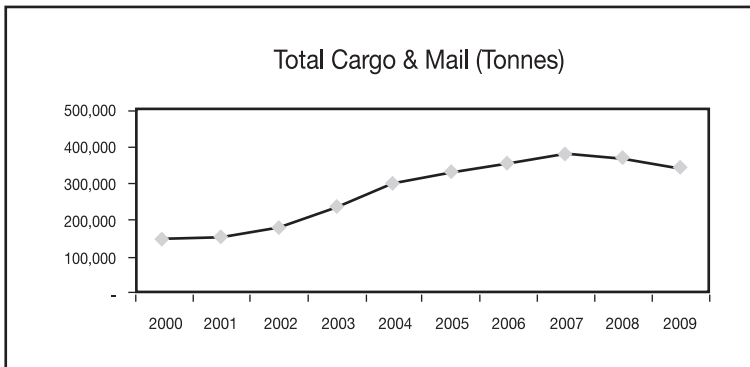
Total Passenger Movements



Total Aircraft Movements







Source: CAA, BAS , and DHL



#### Aviation Fuel Uplift Summary (US Gallons) 2009

	BAPCO	GF %	CHEVRON	GF %	BP	GF %	TOTAL
JANUARY	10,738,597	59.6%	4,958,089	58.8%	2,613,409	53.5%	18,310,095
FEBRUARY	9,858,408	60.7%	4,703,398	57.8%	2,428,502	53.5%	16,990,308
MARCH	10,950,259	61.8%	5,197,524	57.6%	2,636,176	55.0%	18,783,959
APRIL	9,182,477	60.4%	4,633,394	54.7%	2,725,564	44.9%	16,541,435
MAY	9,832,507	62.1%	4,924,816	56.2%	2,389,039	55.8%	17,146,362
JUNE	9,270,177	59.5%	4,928,148	51.3%	2,638,911	45.1%	16,837,236
JULY	11,397,359	63.6%	3,249,758	57.2%	5,739,946	48.9%	20,387,063
AUGUST	11,529,549	62.7%	5,780,844	56.3%	2,920,627	53.4%	20,231,020
SEPTEMBER	10,586,839	62.4%	5,192,869	57.6%	2,811,087	51.6%	18,590,795
OCTOBER	10,859,488	58.8%	5,586,339	51.8%	2,722,485	51.2%	19,168,312
NOVEMBER	10,048,283	56.7%	5,754,408	44.9%	2,724,335	45.4%	18,527,026
DECEMBER	11,207,175	54.0%	6,117,336	45.2%	2,886,766	46.0%	20,211,277
<b>TOTAL</b>	<b>125,461,118</b>	<b>60%</b>	<b>61,026,923</b>	<b>54%</b>	<b>35,236,847</b>	<b>50%</b>	<b>221,724,888</b>
Average	10,455,093	60.2%	5,085,577	54.1%	2,936,404	50.3%	18,477,074
Market Share	57%		28%		16%		100%

Source: BAFCO



### Aviation Fuel Uplift Summary (US Gallons) 2008

	BAPCO	GF %	CHEVRON	GF %	BP	GF %	TOTAL	%GROWTH
JANUARY	10,411,860	58.4%	5,246,542	52.4%	2,496,754	52.5%	18,155,156	1%
FEBRUARY	10,284,330	56.1%	4,861,245	53.4%	2,236,423	55.8%	17,381,998	-2%
MARCH	10,276,330	52.8%	4,947,662	50.2%	2,249,479	52.3%	17,473,471	7%
APRIL	9,875,350	54.6%	4,871,185	49.7%	2,141,857	54.6%	16,888,392	-2%
MAY	9,081,905	56.5%	4,992,810	47.1%	2,153,529	52.3%	16,228,244	6%
JUNE	9,560,103	56.8%	4,996,907	49.0%	2,404,036	49.2%	16,961,046	-1%
JULY	10,463,719	57.2%	5,091,894	52.8%	2,714,027	47.7%	18,269,640	12%
AUGUST	12,113,444	59.4%	5,735,623	57.1%	3,122,351	49.8%	20,971,418	-4%
SEPTEMBER	11,463,907	56.2%	5,133,176	57.2%	2,981,619	47.6%	19,578,702	-5%
OCTOBER	11,761,172	56.7%	5,106,116	58.3%	2,793,016	51.8%	19,660,304	-3%
NOVEMBER	11,525,635	55.5%	5,344,841	54.2%	2,857,898	49.0%	19,728,374	-6%
DECEMBER	12,786,382	57.2%	6,260,694	53.1%	2,746,836	58.0%	21,793,912	-7%
<b>TOTAL</b>	<b>129,604,137</b>	<b>56%</b>	<b>62,588,695</b>	<b>53%</b>	<b>30,897,825</b>	<b>52%</b>	<b>223,090,657</b>	<b>-1%</b>
Average	10,800,345	56%	5,215,725	53%	2,574,819	52%	18,590,888	
MarketShare	58%		28%		14%		100%	





## PASSENGER MOVEMENTS

- **Comparison of Total Passengers Traffic 2000-2009**
- **Top 25 Destinations 2008-2009**
- **Total Passengers by Region 2009**
- **Summary of Embarked / Disembarked Passengers by Region 2008-2009**
- **Total Passengers by Airline and Destination 2009**

### **Passenger Movements Summary**

Passenger throughput is the predominant role of all major airports. At Bahrain International Airport embarked and disembarked passengers contributed to 49% of the total throughput, an increase by 1% over 2008. Passengers transferring rather than transiting through the Airport also increased by 1% representing the continuing role of the Airport as a hub for airline operations.

55 destinations were served by 44 airlines from Bahrain International Airport during 2009. Dubai continued to be the most popular route with 1,067,013 passengers although this was 3% less than in 2008. Other popular destinations were Doha, Kuwait which registered a 24% increase in traffic during the year, London, Abu Dhabi, Riyadh, Muscat and Manila all of which carried over 300,000 passengers.

Traffic in the South East Asia Region registered the strongest growth at 11% whilst traffic in the Middle East and Africa Region also grew by 9%. Traffic to Muscat increased by 41% over the previous year whilst traffic to Dhaka increased by 37%, Kuala Lumpur by 27% and Kuwait by 24%, all registering impressive growth. In volume terms Dubai continued to be the most popular destination with 1,067,013 passengers although this was 3% lower than the 2008 level. Traffic to Doha at 880,835 passengers was also 8% less than the previous year. Manila continued to be the busiest route in the SE Asia Region with 306,223 passengers, an increase of 6% over 2008. London was the strongest European destination with 464,283 passengers, however with only marginal growth of 1% over the previous year.



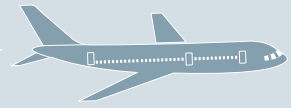
**Airside  
Services  
Group**



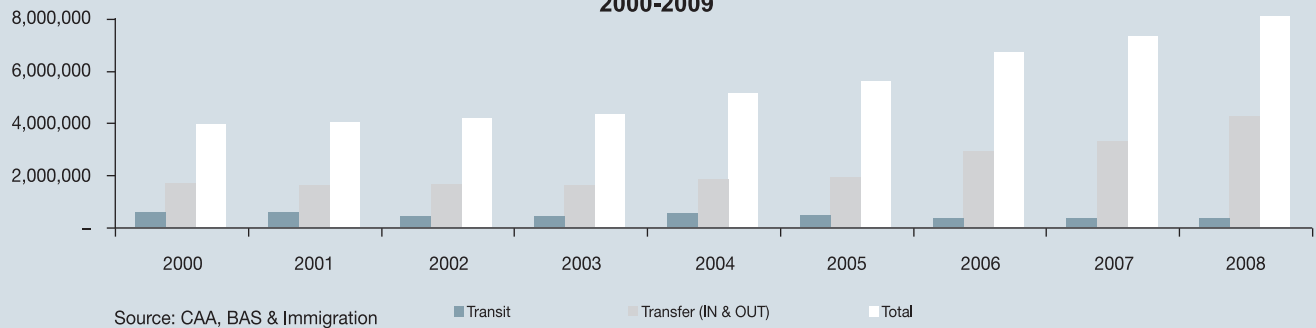
# PASSENGER MOVEMENTS

Comparison of Total Passengers Traffic 2000-2009

	2000	2001	2002	2003	2004	2005	2006	2007	2008	2009
ARRIVALS	917,402	991,047	1,153,335	1,221,996	1,461,831	1,693,207	1,834,158	1,966,922	2,218,536	2,337,737
GROWTH	7%	8%	16%	6%	20%	16%	8%	7%	13%	5%
DEPARTURES	852,283	907,604	1,014,824	1,075,304	1,334,523	1,571,974	1,605,162	1,714,688	1,948,335	2,102,824
GROWTH	9%	6%	12%	6%	24%	18%	2%	7%	14%	8%
TRANSFERS (IN & OUT)	1,610,661	1,545,924	1,607,054	1,589,656	1,820,784	1,904,650	2,923,045	3,302,019	4,244,571	4,296,413
GROWTH	25%	-4%	4%	-1%	15%	5%	53%	13%	29%	1%
TRANSIT	550,236	547,048	371,892	410,023	527,152	411,672	333,660	336,410	346,626	316,657
GROWTH	12%	-1%	-32%	10%	29%	-22%	-19%	1%	3%	-9%
<b>TOTAL PASSENGERS</b>	<b>3,930,585</b>	<b>3,991,623</b>	<b>4,147,105</b>	<b>4,296,979</b>	<b>5,144,290</b>	<b>5,581,503</b>	<b>6,696,025</b>	<b>7,320,039</b>	<b>8,758,068</b>	<b>9,053,631</b>
GROWTH	15%	2%	4%	4%	20%	8%	20%	9%	20%	3%
% OF LOCAL TRAFFIC	45%	48%	52%	53%	54%	59%	51%	50%	48%	49%



### Transit, Transfer And Total Passengers 2000-2009



Source: CAA, BAS & Immigration

■ Transit

■ Transfer (IN & OUT)

■ Total





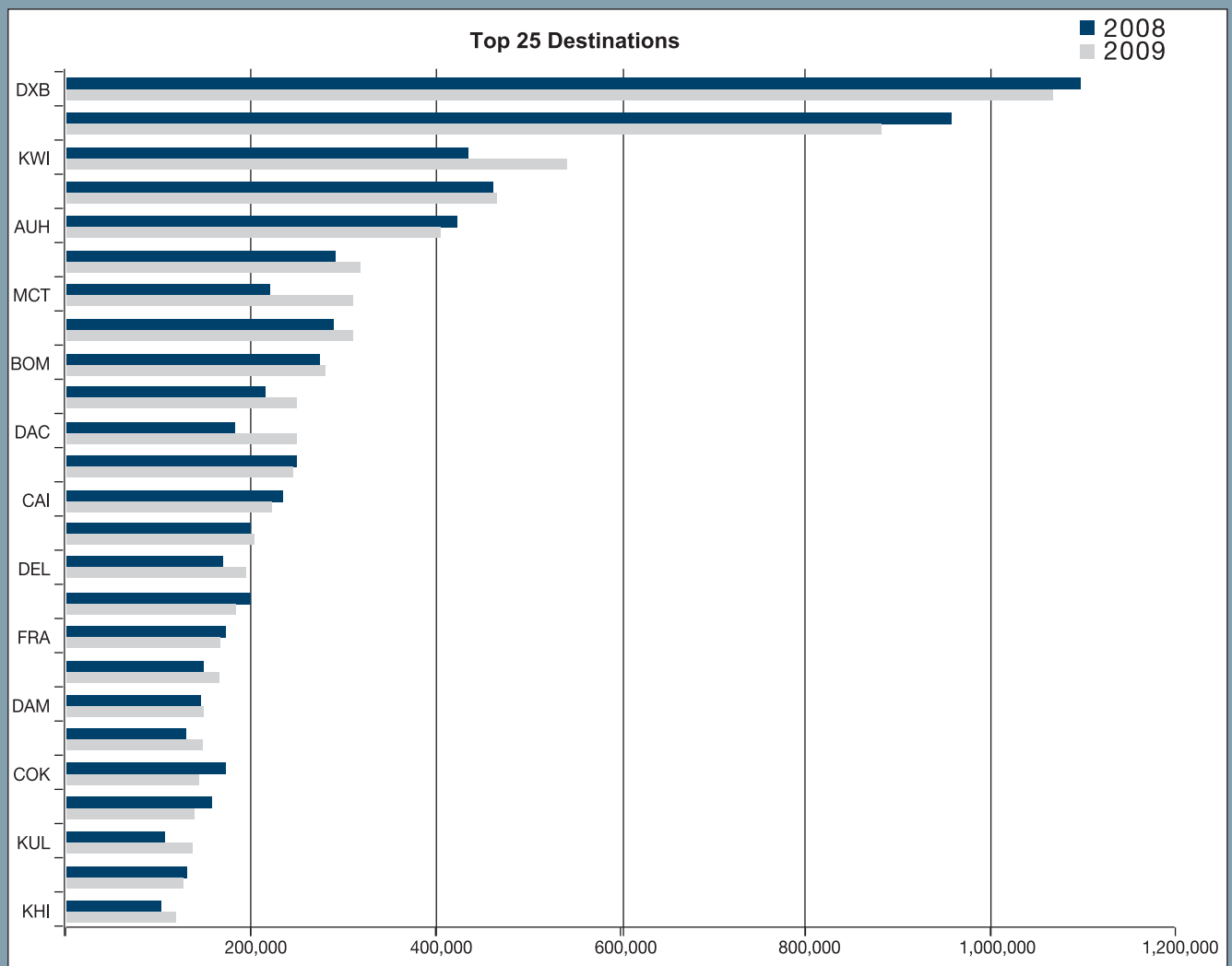
# PASSENGER MOVEMENTS

## Top 25 Destinations 2008-2009

Destination	Airports	PAX2009	PAX2008	%Growth
DXB	Dubai Intl	1,067,013	1,096,777	-3%
DOH	Doha Intl	880,835	956,700	-8%
KWI	Kuwait Intl	540,470	435,700	24%
LHR	London Heathrow	464,283	459,773	1%
AUH	Abu Dhabi Intl	402,182	419,201	-4%
RUH	Riyadh K. Khaled	316,975	290,938	9%
MCT	Muscat Seeb	308,609	218,845	41%
MNL	Manila Ninoy Intl	306,223	288,047	6%
BOM	Mumbai	278,176	273,704	2%
KTM	Kathmandu Tribhuvan	248,020	214,142	16%
DAC	Dhaka Zia Intl	247,786	181,461	37%
JED	Jeddah King Abdul Aziz	244,273	248,672	-2%
CAI	Cairo Intl	221,487	230,736	-4%
BKK	Bangkok Intl	200,395	199,032	1%
DEL	New Delhi Indira Gandhi	192,941	167,868	15%
SHJ	Sharjah	181,468	195,691	-7%
FRA	Frankfurt Intl	162,800	168,954	-4%
DMM	Dammam King Fahad	161,306	146,662	10%
DAM	Damascus Intl	146,463	144,436	1%
BEY	Beirut Intl	144,958	128,080	13%
COK	Cochi Intl	140,145	170,030	-18%
AMM	Amman Queen Alia	135,657	155,576	-13%
KUL	Kuala Lumpur	134,292	105,985	27%
CDG	Paris Charles De Gaulle	124,623	128,162	-3%
KHI	Karachi Moh'd Aatham Khan	116,026	100,729	39%
<b>TOTAL</b>		<b>7,367,406</b>	<b>7,125,901</b>	<b>3%</b>
OTHERS		1,686,225	1,632,167	3%
<b>GRAND TOTAL</b>		<b>9,053,631</b>	<b>8,758,068</b>	<b>3%</b>

Source: CAA & BAS

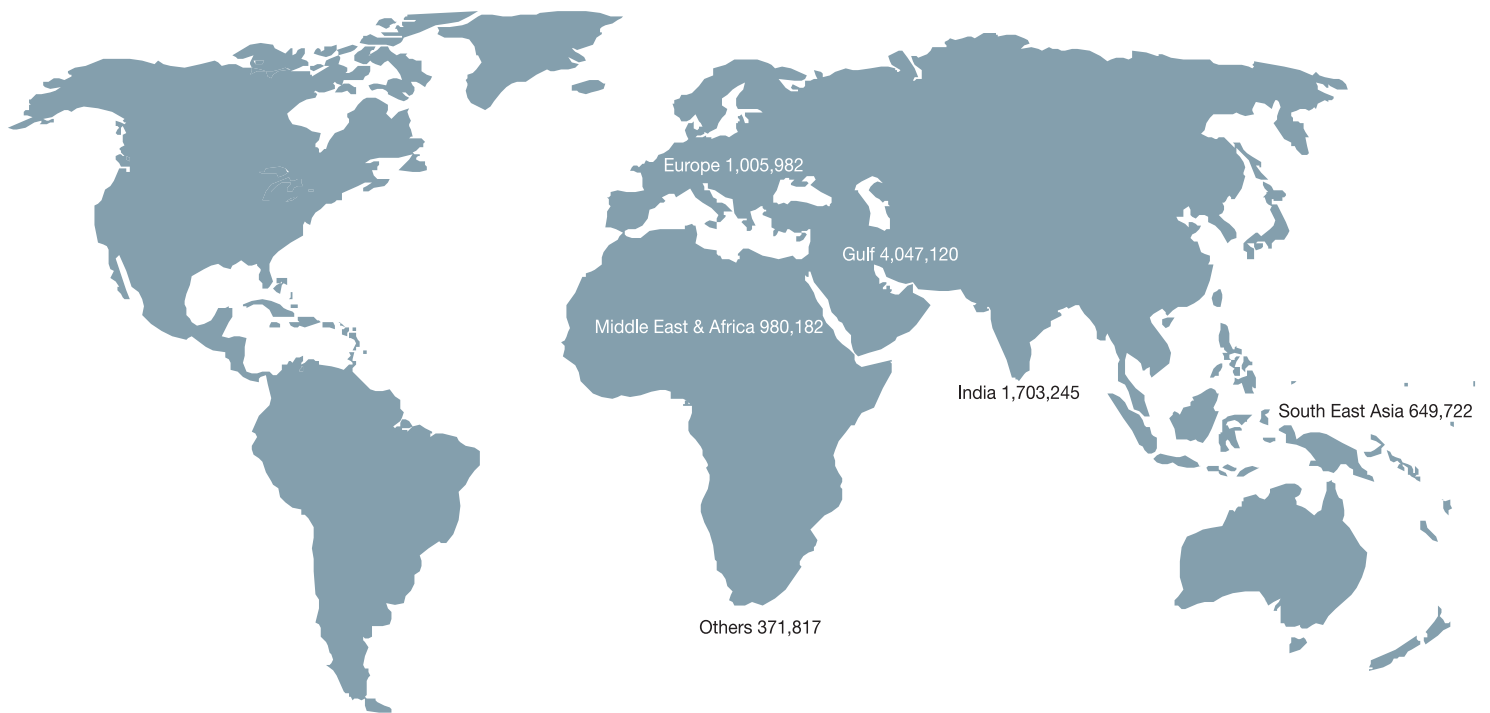






# PASSENGER MOVEMENTS

## Total Passengers by Region 2009



Source: CAA and BAS



### Summary of Embarked/Disembarked Passengers by Region 2008-2009

Region	2009			2008			%GROWTH
	Embarked	Disembarked	Total	Embarked	Disembarked	Total	
Gulf Region	2,119,765	2,035,683	4,155,448	2,029,406	2,017,714	4,047,120	3%
Middle East & Africa	530,143	542,505	1,072,648	500,527	479,655	980,182	9%
Europe	473,141	507,107	980,248	489,300	516,682	1,005,982	-3%
India	835,325	853,478	1,688,803	871,372	831,873	1,703,245	-1%
South East Asia	358,897	359,310	718,207	328,725	320,997	649,722	11%
Others	219,627	218,650	438,277	187,730	184,087	371,817	18%
<b>Total*</b>	<b>4,536,898</b>	<b>4,516,733</b>	<b>9,053,631</b>	<b>4,407,060</b>	<b>4,351,008</b>	<b>8,758,068</b>	<b>3%</b>

\*Transit is included in Total Embarked and Disembarked  
Source: CAA & BAS





# PASSENGER MOVEMENTS

## Total Passengers by Airline and Destination 2009 - Gulf Region

Country	Airline	Arrivals	Arrivals	Departures	Arrivals	Total	Cumulative	2008/2009
City		Jan-Dec 09	%Growth	Jan-Dec 09	%Growth	Cumulative 09	Last Year 08	%Growth
Kuwait								
Kuwait(KWI)	Bahrain Air(2B)	15,707	210%	14,090	283%	29,797	8,736	241%
Kuwait(KWI)	Ethiopian Airlines(ET)	2,067	-	-	-	2,067	-	-
Kuwait(KWI)	Gulf Air(GF)	119,476	3%	126,426	-2%	245,902	244,663	1%
Kuwait(KWI)	Jazeera Airways(J9)	71,036	30%	65,771	38%	136,807	102,242	34%
Kuwait(KWI)	KLM(KL)	12,158	-	764	-	12,922	-	-
Kuwait(KWI)	Kuwait Airways(KU)	34,371	-12%	38,444	-1%	72,815	77,992	-7%
Kuwait(KWI)	Wataniya Airways(KW)	19,485	-	19,787	-	39,272	-	-
Kuwait(KWI)	Tunisair(TU)	-	-	-	-	-	1161	-
Kuwait(KWI)	Othres	380	86%	508	-28%	888	906	-2%
<b>Total</b>		<b>274,680</b>	<b>27%</b>	<b>265,790</b>	<b>21%</b>	<b>540,470</b>	<b>435,700</b>	<b>24%</b>
Oman								
Muscat(MCT)	Gulf Air(GF)	99,281	53%	82,185	1%	181,466	146,436	24%
Muscat(MCT)	Oman Air(WY)	54,537	61%	72,484	89%	127,021	72,285	76%
Muscat(MCT)	Others	29	-19%	93	6%	122	124	-2%
<b>Total</b>		<b>153,847</b>	<b>56%</b>	<b>154,762</b>	<b>29%</b>	<b>308,609</b>	<b>218,845</b>	<b>41%</b>
Qatar								
Doha(DOH)	Bahrain Air(2B)	55,819	20%	62,181	47%	118,000	88,575	33%
Doha(DOH)	British Airways(BA)	3,204	-16%	2,880	-26%	6,084	7,735	-21%
Doha(DOH)	Gulf Air(GF)	201,486	3%	169,979	-18%	371,465	403,258	-8%
Doha(DOH)	Indian Airlines(IC)	-	-	-	-	-	24,271	-
Doha(DOH)	Air India Express(IX)	26,758	65%	404	135%	27,162	16,416	65%
Doha(DOH)	Jazeera Airways(J9)	-	-	-	-	-	143	-
Doha(DOH)	Pakistan Intl. Airlines(PK)	845	-58%	-	-	845	1,993	-58%
Doha(DOH)	Qatar Airways(QR)	164,649	-16%	175,184	-11%	339,833	393,115	-14%
Doha(DOH)	Syrian Arab Airlines(RB)	1,700	10%	-	-	1,700	1,552	10%
Doha(DOH)	Turkish Airlines(TK)	4,905	-42%	38	-7%	4,943	8,440	-41%
Doha(DOH)	Srilankan Airlines(UL)	6,540	-39%	21	-83%	6,561	10,781	-39%
Doha(DOH)	Oman Air(WY)	3,737	-	5	-	3,742	-	-
Doha(DOH)	Others	147	17%	353	20%	500	421	19%
<b>Total</b>		<b>469,790</b>	<b>-7%</b>	<b>411,045</b>	<b>-9%</b>	<b>880,835</b>	<b>956,700</b>	<b>-8%</b>
Republic of Yemen								
Sannaa(SAH)	Gulf Air(GF)	20,025	36%	15,200	36%	35,225	25,939	36%
Sannaa(SAH)	Yemenia-Yemen Airways(IY)	2,667	-39%	3,104	-33%	5,771	8,989	-36%
Sannaa(SAH)	Jazeera Airways(J9)	5,408	-	4,971	677%	10,379	640	1522%
Sannaa(SAH)	Others	-	-	-	-	-	-	-
<b>Total</b>		<b>28,100</b>	<b>47%</b>	<b>23,275</b>	<b>42%</b>	<b>51,375</b>	<b>35,568</b>	<b>44%</b>



Country	Airline	Arrivals	Arrivals	Departures	Arrivals	Total	Cumulative	2008/2009
City		Jan-Dec 09	%Growth	Jan-Dec 09	%Growth	Cumulative 09	Last Year 08	%Growth
Saudi Arabia								
Dammam(DMM)	Gulf Air(GF)	80,618	17%	79,383	2%	160,001	146,662	9%
Dammam(DMM)	Lufthansa(LH)	1,210	-	95	-	1,305	-	-
Jeddah(JED)	Bahrain Air(2B)	11,544	136%	9,393	161%	20,937	8,492	147%
Jeddah(JED)	Gulf Air(GF)	113,312	-9%	96,677	-3%	209,989	225,005	-7%
Jeddah(JED)	Saudia Arabian Airlines(SV)	6,227	-11%	6,980	-13%	13,207	14,996	-12%
Jeddah(JED)	Others	48	-11%	92	-26%	140	179	-22%
Madinah(MED)	Gulf Air(GF)	774	-16%	168	-59%	942	1,333	-29%
Madinah(MED)	Saudia Arabian Airlines(SV)	-	-	-	-	-	1,031	-
Riyadh(RUH)	Bahrain Air(2B)	1,067	-	4,340	-	5,407	-	-
Riyadh(RUH)	Cathay Pacific(CX)	3,698	-	2	-	3,700	-	-
Riyadh(RUH)	Gulf Air(GF)	126,864	2%	145,903	9%	272,767	257,640	6%
Riyadh(RUH)	Saudia Arabian Airlines(SV)	17,622	3%	16,375	5%	33,997	32,640	4%
Riyadh(RUH)	Others	348	97%	756	57%	1,104	658	68%
<b>Total</b>		<b>363,332</b>	<b>4%</b>	<b>360,164</b>	<b>6%</b>	<b>723,496</b>	<b>688,636</b>	<b>5%</b>
U.A.E								
Al Ain(AAN)	Others	-	-	-	-	-	2	-
Abu Dhabi(AUH)	Bahrain Air(2B)	23,948	-	26,139	-	50,087	-	-
Abu Dhabi(AUH)	Etihad Airways(EY)	81,832	-28%	92,517	-17%	174,349	224,570	-22%
Abu Dhabi(AUH)	Gulf Air(GF)	81,741	6%	94,354	-2%	176,095	172,959	2%
Abu Dhabi(AUH)	KLM(KL)	-	-	-	-	-	21,287	-
Abu Dhabi(AUH)	Others	454	790%	1,197	258%	1,651	385	329%
Dubai(DXB)	Bahrain Air(2B)	61,379	13%	61,100	1%	122,479	114,889	7%
Dubai(DXB)	Cathay Pacific(CX)	-	-	-	-	-	12,744	-
Dubai(DXB)	Cyprus Airways(CY)	-	-	-	-	-	849	-
Dubai(DXB)	Emirates Airlines(EK)	174,104	4%	160,591	4%	334,695	322,130	4%
Dubai(DXB)	Fly Dubai(FZ)	1,396	-	1,365	-	2,761	-	-
Dubai(DXB)	Gulf Air(GF)	264,544	-0.4%	251,745	-20%	516,289	580,663	-11%
Dubai(DXB)	Yemenia-Yemen Airways(IY)	1,945	-28%	1,235	-3%	3,180	3,958	-20%
Dubai(DXB)	Jazeera Airways(J9)	44,376	51%	41,945	36%	86,321	60,258	43%
Dubai(DXB)	Others	456	-14%	832	10%	1,288	1,286	0%
Sharjah(SHJ)	Air Arabia(G9)	93,841	-7%	87,627	-8%	181,468	195,691	-7%
<b>Total</b>		<b>830,016</b>	<b>-2%</b>	<b>820,647</b>	<b>-5%</b>	<b>1,650,663</b>	<b>1,711,671</b>	<b>-4%</b>
<b>Total Region</b>		<b>2,119,765</b>	<b>4%</b>	<b>2,035,683</b>	<b>1%</b>	<b>4,155,448</b>	<b>4,047,120</b>	<b>3%</b>



# PASSENGER MOVEMENTS

## Total Passengers by Airline and Destination 2009 - Middle East and Africa

Country	Airline	Arrivals	Arrivals	Departures	Arrivals	Total	Cumulative	2008/2009
City		Jan-Dec 09	%Growth	Jan-Dec 09	%Growth	Cumulative 09	Last Year 08	%Growth
Comoros								
Moroni Intl.								
Prince Said(HAH)	Bahrain Air(2B)	1	-	-	-	1	-	-
<b>Total</b>		<b>1</b>	<b>-</b>	<b>-</b>	<b>-</b>	<b>1</b>	<b>-</b>	<b>-</b>
Djibouti								
Djibouti	Others	131	42%	114	-63%	245	399	-39%
<b>Total</b>		<b>131</b>	<b>42%</b>	<b>114</b>	<b>-63%</b>	<b>245</b>	<b>399</b>	<b>-39%</b>
Egypt								
Alexandria(ALY)	Bahrain Air(2B)	15,204	16%	18,166	25%	33,370	27,729	20%
Assiut(ATZ)	Bahrain Air(2B)	-	-	-	-	-	796	-
Cairo(CAI)	Others	5	-	34	-	39	-	-
Cairo(CAI)	Gulf Air(GF)	100,576	-8%	84,584	-9%	185,160	202,293	-8%
Cairo(CAI)	Egypt Air(MS)	17,604	24%	18,684	31%	36,288	28,443	28%
Borg El Arab(HBE)	Bahrain Air(2B)	389	-	477	-	866	-	-
Luxor(LXR)	Bahrain Air(2B)	-	-	-	-	-	1,220	-
<b>Total</b>		<b>133,778</b>	<b>-3%</b>	<b>121,945</b>	<b>-1%</b>	<b>255,723</b>	<b>260,481</b>	<b>-2%</b>
Ethiopia								
Addis Ababa(ADD)	Ethiopian Airlines(ET)	5,398	-16%	11,844	94%	17,242	12,564	37%
<b>Total</b>		<b>5,398</b>	<b>-16%</b>	<b>11,844</b>	<b>94%</b>	<b>17,242</b>	<b>12,564</b>	<b>37%</b>
Iran								
Imam Khomeini								
Internationna(IKA)	Gulf Air(GF)	28,844	50%	31,669	33%	60,513	43,072	40%
Imam Khomeini								
Internationna(IKA)	Others	-	-	29	-	29	-	-
Mashad(MHD)	Bahrain Air(2B)	4,731	-56%	5,210	-55%	9,941	22,116	-55%
Mashad(MHD)	Gulf Air(GF)	35,868	35%	31,618	32%	67,486	50,510	34%
Mashad(MHD)	Iran Air(IR)	12,516	-11%	13,335	-11%	25,851	28,964	-11%
Shiraz(SYZ)	Gulf Air(GF)	29,866	25%	27,999	25%	57,865	46,250	25%
Shiraz(SYZ)	Iran Air(IR)	3,690	-24%	3,587	-28%	7,277	9,825	-26%
Tehran(THR)	Iran Air(IR)	-	-	-	-	-	98	-
<b>Total</b>		<b>115,515</b>	<b>16%</b>	<b>113,447</b>	<b>12%</b>	<b>228,962</b>	<b>200,835</b>	<b>14%</b>
Iraq								
Baghdad(BGW)	Bahrain Air(2B)	781	-	735	-	1,516	-	-
Baghdad(BGW)	Gulf Air(GF)	4,071	-	4,661	-	8,732	-	-
Baghdad(BGW)	Iraq Airways(IA)	2,405	-	5,598	-	8,003	-	-
Irbil(EBL)	Gulf Air(GF)	1,018	-	1,044	-	2,062	-	-
Najaf(NJF)	Bahrain Air(2B)	2,615	-	3,107	-	5,722	-	-
Najaf(NJF)	Gulf Air(GF)	5,446	-	6,122	-	11,568	-	-
Najaf(NJF)	Iraq Airways(IA)	4,957	-	6,206	-	11,163	-	-
<b>Total</b>		<b>21,293</b>	<b>-</b>	<b>27,473</b>	<b>-</b>	<b>48,766</b>	<b>-</b>	<b>-</b>



Country	Airline	Arrivals	Arrivals	Departures	Arrivals	Total	Cumulative	2008/2009
City		Jan-Dec 09	%Growth	Jan-Dec 09	%Growth	Cumulative 09	Last Year 08	%Growth
Jordan								
Amman(AMM)	Bahrain Air(2B)	8,952	-22%	10,707	-18%	19,659	24,486	-20%
Amman(AMM)	Gulf Air(GF)	46,437	-18%	42,742	-15%	89,179	107,005	-17%
Amman(AMM)	Royal Jordanian(RJ)	13,454	12%	13,191	9%	26,645	24,045	11%
Amman(AMM)	Others	70	1300%	104	197%	174	40	335%
<b>Total</b>		<b>68,913</b>	<b>-14%</b>	<b>66,744</b>	<b>-12%</b>	<b>135,657</b>	<b>155,576</b>	<b>-13%</b>
Lebanon								
Beirut(BEY)	Bahrain Air(2B)	17,576	24%	19,504	16%	37,080	30,969	20%
Beirut(BEY)	Gulf Air(GF)	48,170	0%	59,418	22%	107,588	96,964	11%
Beirut(BEY)	Others	179	238%	111	18%	290	147	97%
<b>Total</b>		<b>65,925</b>	<b>6%</b>	<b>79,033</b>	<b>20%</b>	<b>144,958</b>	<b>128,080</b>	<b>13%</b>
Sudan								
Khartoum(KRT)	Bahrain Air(2B)	10,755	3392%	9,960	2521%	20,715	688	2911%
Khartoum(KRT)	Gulf Air(GF)	27,621	-15%	27,676	-3%	55,297	60,855	-9%
<b>Total</b>		<b>38,376</b>	<b>17%</b>	<b>37,636</b>	<b>30%</b>	<b>76,012</b>	<b>61,543</b>	<b>24%</b>
Seychelles								
Mahe Island(SEZ)	Others	5	-	11	267%	16	3	433%
<b>Total</b>		<b>5</b>	<b>-</b>	<b>11</b>	<b>267%</b>	<b>16</b>	<b>3</b>	<b>433%</b>
Syrian Arab Republic								
Aleppo(ALP)	Bahrain Air(2B)	9,142	49%	8,274	38%	17,416	12,126	44%
Damascus(DAM)	Bahrain Air(2B)	20,528	42%	21,282	29%	41,810	30,859	35%
Damascus(DAM)	Gulf Air(GF)	48,464	-16%	50,016	-1%	98,480	108,040	-9%
Damascus(DAM)	Syrian Arab Airlines(RB)	2,159	5%	4,004	15%	6,163	5,537	11%
Damascus(DAM)	Others	-	-	10	-	10	-	-
<b>Total</b>		<b>80,293</b>	<b>0%</b>	<b>83,586</b>	<b>9%</b>	<b>163,879</b>	<b>156,562</b>	<b>5%</b>
Tunisia								
Tunis(TUN)	Tunisair(TU)	-	-	-	-	-	4,139	-
Tunis(TUN)	Others	1	-	-	-	1	-	-
<b>Total</b>		<b>1</b>	<b>-</b>	<b>-</b>	<b>-</b>	<b>1</b>	<b>4,139</b>	<b>-100%</b>
Uganda								
Entebbe/								
Kampala(EBB)	Bahrain Air(2B)	502	-	672	-	1,174	-	-
<b>Total</b>		<b>502</b>	<b>-</b>	<b>672</b>	<b>-</b>	<b>1,174</b>	<b>-</b>	<b>-</b>
Zimbabwe								
Kariba								
Zimbabwe(KAB)	Others	12	-	-	-	12	-	-
<b>Total</b>		<b>12</b>	<b>-</b>	<b>-</b>	<b>-</b>	<b>12</b>	<b>-</b>	<b>-</b>
<b>Regional Total</b>		<b>530,143</b>	<b>6%</b>	<b>542,505</b>	<b>13%</b>	<b>1,072,648</b>	<b>980,182</b>	<b>9%</b>



# PASSENGER MOVEMENTS

## Total Passengers by Airline and Destination 2009 - Europe

Country	Airline	Arrivals	Arrivals	Departures	Arrivals	Total	Cumulative	2008/2009
City		Jan-Dec 09	%Growth	Jan-Dec 09	%Growth	Cumulative 09	Last Year 08	%Growth
<b>Cyprus</b>								
Larnaca(LCA)	Cyprus Airways(CY)	-	-	-	-	-	3,098	-
Larnaca(LCA)	Gulf Air(GF)	19,079	3%	18,596	-2%	37,675	37,464	1%
Larnaca(LCA)	Others	-	-	-	-	-	28	-
<b>Total</b>		<b>19,079</b>	<b>-1%</b>	<b>18,596</b>	<b>-13%</b>	<b>37,675</b>	<b>40,590</b>	<b>-7%</b>
<b>France</b>								
Paris Charles De Gaulle Apt(CDG)	Gulf Air(GF)	60,413	-7%	64,171	1%	124,584	128,091	-3%
Paris Charles De Gaulle Apt(CDG)	Others	-	-	39	-45%	39	71	-45%
Nice(NCE)	Others	140	186%	37	-51%	177	125	42%
<b>Total</b>		<b>60,553</b>	<b>-7%</b>	<b>64,247</b>	<b>1%</b>	<b>124,800</b>	<b>128,287</b>	<b>-3%</b>
<b>Germany</b>								
Frankfurt(FRA)	Condor Airlines(DE)	115	-	617	-	732	-	-
Frankfurt(FRA)	Gulf Air(GF)	63,119	-6%	60,423	-1%	123,542	128,486	-4%
Frankfurt(FRA)	Lufthansa(LH)	18,858	-7%	19,668	-3%	38,526	40,468	-5%
Frankfurt(FRA)	Others	-	-	-	-	-	-	-
<b>Total</b>		<b>82,092</b>	<b>-6%</b>	<b>80,708</b>	<b>-1%</b>	<b>162,800</b>	<b>168,954</b>	<b>-4%</b>
<b>Greece</b>								
Athens(ATH)	Gulf Air(GF)	23,910	-26%	21,907	-33%	45,817	65,054	-30%
Chania(CHQ)	Others	3,601	-30%	4,054	-20%	7,655	10,226	-25%
<b>Total</b>		<b>27,511</b>	<b>-27%</b>	<b>25,961</b>	<b>-31%</b>	<b>53,472</b>	<b>75,280</b>	<b>-29%</b>
<b>Italy</b>								
Sigonella(NSY)	Others	155	-	205	-	360	-	-
<b>Total</b>		<b>155</b>	<b>-</b>	<b>205</b>	<b>-</b>	<b>360</b>	<b>-</b>	<b>-</b>
<b>Netherlands</b>								
Amsterdam(AMS)	KLM(KL)	16,841	-3%	32,867	-10%	49,708	53,692	-7%
Amsterdam(AMS)	Arkefly(OR)	-	-	1	-	1	-	-
<b>Total</b>		<b>16,841</b>	<b>-3%</b>	<b>32,868</b>	<b>-10%</b>	<b>49,709</b>	<b>53,692</b>	<b>-7%</b>





Country	Airline	Arrivals	Arrivals	Departures	Arrivals	Total	Cumulative	2008/2009
City		Jan-Dec 09	%Growth	Jan-Dec 09	%Growth	Cumulative 09	Last Year 08	%Growth
Sweden								
Stockholm								
Arlanda Apt(ARN)	Others	-	-	-	-	-	5	-
Stockholm(STO)	Others	-	-	-	-	-	-	-
<b>Total</b>		<b>-</b>	<b>-</b>	<b>-</b>	<b>-</b>	<b>-</b>	<b>5</b>	<b>-</b>
Switzerland								
Geneva(GVA)	Others	-	-	-	-	-	136	-
Zurich(ZRH)	Others	-	-	7	250%	7	17	-59%
<b>Total</b>		<b>-</b>	<b>-</b>	<b>7</b>	<b>-94%</b>	<b>7</b>	<b>153</b>	<b>-95%</b>
Turkey								
Ankara(ANK)	Others	-	-	5	-44%	5	9	-44%
Istanbul(IST)	Gulf Air(GF)	18,816	-19%	17,647	-16%	36,463	44,208	-18%
Istanbul(IST)	Turkish Airlines(TK)	22,375	71%	28,299	29%	50,674	35,003	45%
Istanbul(IST)	Others	-	-	-	-	-	13	-
<b>Total</b>		<b>41,191</b>	<b>14%</b>	<b>45,951</b>	<b>7%</b>	<b>87,142</b>	<b>79,233</b>	<b>10%</b>
U.K								
Brize Northon(BZZ)	Others	-	-	-	-	-	2	-
London								
Heathrow(LHR)	British Airways(BA)	52,182	10%	57,099	10%	109,281	99,042	10%
London								
Heathrow(LHR)	Gulf Air(GF)	173,524	-3%	181,237	-0.03%	354,761	360,731	-2%
London								
Heathrow(LHR)	Others	13	-	228	-	241	-	-
Luton(LTN)	Others	-	-	-	-	-	13	-
<b>Total</b>		<b>225,719</b>	<b>0%</b>	<b>238,564</b>	<b>2%</b>	<b>464,283</b>	<b>459,788</b>	<b>1%</b>
<b>Regional Total</b>		<b>473,141</b>	<b>-3%</b>	<b>507,107</b>	<b>-2%</b>	<b>980,248</b>	<b>1,005,982</b>	<b>-3%</b>



# PASSENGER MOVEMENTS

## Total Passengers by Airline and Destination 2009- Indian Sub continent

Country	Airline	Arrivals	Arrivals	Departures	Arrivals	Total	Cumulative	2008/2009
City		Jan-Dec 09	%Growth	Jan-Dec 09	%Growth	Cumulative 09	Last Year 08	%Growth
Afghansitan								
Kandahar(KDH)	Others	-	-	8	-	8	-	-
<b>Total</b>		<b>-</b>	<b>-</b>	<b>8</b>	<b>-</b>	<b>8</b>	<b>-</b>	<b>-</b>
Bangladesh								
Dhaka(DAC)	Gulf Air(GF)	132,159	24%	115,627	54%	247,786	181,461	37%
<b>Total</b>		<b>132,159</b>	<b>24%</b>	<b>115,627</b>	<b>54%</b>	<b>247,786</b>	<b>181,461</b>	<b>37%</b>
India								
Bangalore(BLR)	Gulf Air(GF)	8,100	-75%	9,128	-71%	17,228	63,346	-73%
Mumbai(BOM)	Bahrain Air(2B)	14,937	-	12,541	-	27,478	-	-
Mumbai(BOM)	Jet Airways(9W)	34,450	10%	33,577	19%	68,027	59,513	14%
Mumbai(BOM)	Gulf Air(GF)	91,034	-23%	81,104	-9%	172,138	207,467	-17%
Mumbai(BOM)	Air India Express(IX)	6,961	372%	3,572	-32%	10,533	6,714	57%
Mumbai(BOM)	Others	-	-	-	-	-	10	-
Calicut(CCJ)	Bahrain Air(2B)	13,116	-	17,072	-	30,188	-	-
Calicut(CCJ)	Air India Express(IX)	11,386	-23%	9,884	-22%	21,270	27,496	-23%
Calicut(CCJ)	Indian Airlines(IC)	-	-	-	-	-	23,469	-
Calutta(CCJ)	Gulf Air(GF)	-	-	-	-	-	23,442	-
Cochin(COK)	Bahrain Air(2B)	23,349	84%	27,142	63%	50,491	29,359	72%
Cochin(COK)	Jet Airways(9W)	-	-	-	-	-	60,786	-
Cochin(COK)	Gulf Air(GF)	39,276	7%	40,426	25%	79,702	69,163	15%
Cochin(COK)	Indian Airlines(IC)	-	-	-	-	-	3,130	-
Cochin(COK)	Air India Express(IX)	133	-	9,819	32%	9,952	7,432	34%
Cochin(COK)	Jazeera Airways(J9)	-	-	-	-	-	160	-
Delhi(DEL)	Gulf Air(GF)	91,979	8%	100,273	21%	192,252	167,868	15%
Delhi(DEL)	Air India Express(IX)	-	-	689	-	689	-	-
Hyderabad(HYD)	Gulf Air(GF)	-	-	-	-	-	29,085	-
Manglore(IXE)	Air India Express(IX)	410	-96%	10,816	1%	11,226	21,971	-49%
Chennai/Madras(MAA)	Gulf Air(GF)	37,134	-9%	42,545	17%	79,679	77,071	3%
Trivandrum(TRV)	Gulf Air(GF)	45,038	-19%	49,535	0%	94,573	105,323	-10%
Trivandrum(TRV)	Air India Express(IX)	6,972	16114%	5,038	99%	12,010	2,572	367%
<b>Total</b>		<b>424,275</b>	<b>-15%</b>	<b>453,161</b>	<b>-7%</b>	<b>877,436</b>	<b>985,377</b>	<b>-11%</b>
Mauritius								
Mauritius(MRU)	Others	-	-	-	-	-	17	-
Diego Garcia(NKW)	Others	27	-81%	33	-69%	60	253	-76%
<b>Total</b>		<b>27</b>	<b>-81%</b>	<b>33</b>	<b>-74%</b>	<b>60</b>	<b>270</b>	<b>-78%</b>



Country	Airline	Arrivals	Arrivals	Departures	Arrivals	Total	Cumulative	2008/2009
City		Jan-Dec 09	%Growth	Jan-Dec 09	%Growth	Cumulative 09	Last Year 08	%Growth
Nepal								
Kathmanddu(KTM)	Bahrain Air(2B)	19,217	-	11,985	-	31,202	-	-
Kathmanddu(KTM)	Gulf Air(GF)	97,512	-5%	119,306	7%	216,818	214,142	1%
<b>Total</b>		<b>116,729</b>	<b>14%</b>	<b>131,291</b>	<b>18%</b>	<b>248,020</b>	<b>214,142</b>	<b>16%</b>
Pakistan								
Islamabad(ISB)	Gulf Air(GF)	35,343	25%	33,598	30%	68,941	54,045	28%
Karachi(KHI)	Gulf Air(GF)	58,909	13%	51,743	11%	110,652	98,656	12%
Karachi(KHI)	Pakistan Intl. Airlines(PK)	3,294	4674%	2,025	1%	5,319	2,068	157%
Karachi(KHI)	Spirit of Manila Airlines(SM)	-	-	55	-	55	-	-
Karachi(KHI)	Others	-	-	-	-	-	5	-
Lahore(LHE)	Gulf Air(GF)	41,229	0.2%	40,282	1%	81,511	80,970	1%
Lahore(LHE)	Pakistan Intl. Airlines(PK)	5,507	1%	2,984	-12%	8,491	8,832	-4%
Peshawar(PEW)	Gulf Air(GF)	10,826	-44%	9,154	-46%	19,980	36,488	-45%
Sialkot(SKT)	Pakistan Intl. Airlines(PK)	-	-	30	-	30	-	-
<b>Total</b>		<b>155,108</b>	<b>6%</b>	<b>139,871</b>	<b>4%</b>	<b>294,979</b>	<b>281,064</b>	<b>5%</b>
Sri Lanka								
Colombo(CMB)	Srilankan Airlines(UL)	7,027	-57%	13,487	-45%	20,514	40,911	-50%
<b>Total</b>		<b>7,027</b>	<b>-57%</b>	<b>13,487</b>	<b>-45%</b>	<b>20,514</b>	<b>40,911</b>	<b>-50%</b>
Maldives								
Male(MLE)	Others	-	-	-	-	-	19	-
<b>Total</b>		<b>-</b>	<b>-</b>	<b>-</b>	<b>-</b>	<b>-</b>	<b>19</b>	<b>-</b>
Turkmenistan								
Ashhabad(ASB)	Others	-	-	-	-	-	1	-
<b>Total</b>		<b>-</b>	<b>-</b>	<b>-</b>	<b>-</b>	<b>-</b>	<b>1</b>	<b>-</b>
<b>Regional Total</b>		<b>871,372</b>	<b>50%</b>	<b>831,873</b>	<b>40%</b>	<b>1,703,245</b>	<b>1,175,666</b>	<b>45%</b>



# PASSENGER MOVEMENTS

## Total Passengers by Airline and Destination 2009 - North and South East Asia

Country	Airline	Arrivals	Arrivals	Departures	Arrivals	Total	Cumulative	2008/2009
City		Jan-Dec 09	%Growth	Jan-Dec 09	%Growth	Cumulative 09	Last Year 08	%Growth
Armenia								
Yerevan	Armavia Air(RNV)	70	-	34	-	104	-	-
<b>Total</b>		<b>70</b>	<b>-</b>	<b>34</b>	<b>-</b>	<b>104</b>	<b>-</b>	<b>-</b>
Azerbaijan								
Baku(BAK)	Others	-	-	1	-80%	1	5	-80%
<b>Total</b>		<b>-</b>	<b>-</b>	<b>1</b>	<b>-80%</b>	<b>1</b>	<b>5</b>	<b>-80%</b>
China								
Pu Dong-								
Shanghai(PVG)	Gulf Air(GF)	24,508	68%	18,374	64%	42,882	25,757	66%
<b>Total</b>		<b>24,508</b>	<b>68%</b>	<b>18,374</b>	<b>64%</b>	<b>42,882</b>	<b>25,757</b>	<b>66%</b>
Hkg								
Hongkong(HKG)	Cathay Pacific(CX)	18,241	-1%	15,298	29%	33,539	30,297	11%
<b>Total</b>		<b>18,241</b>	<b>-1%</b>	<b>15,298</b>	<b>29%</b>	<b>33,539</b>	<b>30,297</b>	<b>11%</b>
Malaysia								
Kuala Lumpur(KUL)	Gulf Air(GF)	66,827	26%	67,452	28%	134,279	105,985	27%
Kuala Lumpur(KUL)	Others	3	-	10	-	13	-	-
<b>Total</b>		<b>66,830</b>	<b>26%</b>	<b>67,462</b>	<b>28%</b>	<b>134,292</b>	<b>105,985</b>	<b>27%</b>
Philippines								
Manila(MNL)	Gulf Air(GF)	148,623	2%	157,600	10%	306,223	288,047	6%
Tacloban(TAC)	Gulf Air(GF)	754	-	9	-	763	-	-
<b>Total</b>		<b>149,377</b>	<b>3%</b>	<b>157,609</b>	<b>10%</b>	<b>306,986</b>	<b>288,047</b>	<b>7%</b>
Russian Federation								
Moscow(MOW)	Others	-	-	-	-	-	98	-
Moscow								
Vnukovo Apt.(VKO)	Others	3	-	5	-	8	-	-
<b>Total</b>		<b>3</b>	<b>-57%</b>	<b>5</b>	<b>-95%</b>	<b>8</b>	<b>98</b>	<b>-92%</b>
Thailand								
Bangkok(BKK)	Gulf Air(GF)	99,868	3%	100,527	-1%	200,395	199,032	1%
Phuket(HKT)	Gulf Air(GF)	-	-	-	-	-	501	-
<b>Total</b>		<b>99,868</b>	<b>2%</b>	<b>100,527</b>	<b>-1%</b>	<b>200,395</b>	<b>199,533</b>	<b>0%</b>
<b>Regional Total</b>		<b>358,897</b>	<b>9%</b>	<b>359,310</b>	<b>12%</b>	<b>718,207</b>	<b>649,722</b>	<b>11%</b>
<b>Total Regions</b>		<b>4,317,271</b>	<b>2%</b>	<b>4,298,083</b>	<b>3%</b>	<b>8,615,354</b>	<b>8,386,251</b>	<b>3%</b>
Others		219,627	17%	218,650	19%	438,277	371,817	18%
<b>Grand Total</b>		<b>4,536,898</b>	<b>3%</b>	<b>4,516,733</b>	<b>4%</b>	<b>9,053,631</b>	<b>8,758,068</b>	<b>3%</b>



# AIRLINE PERFORMANCE



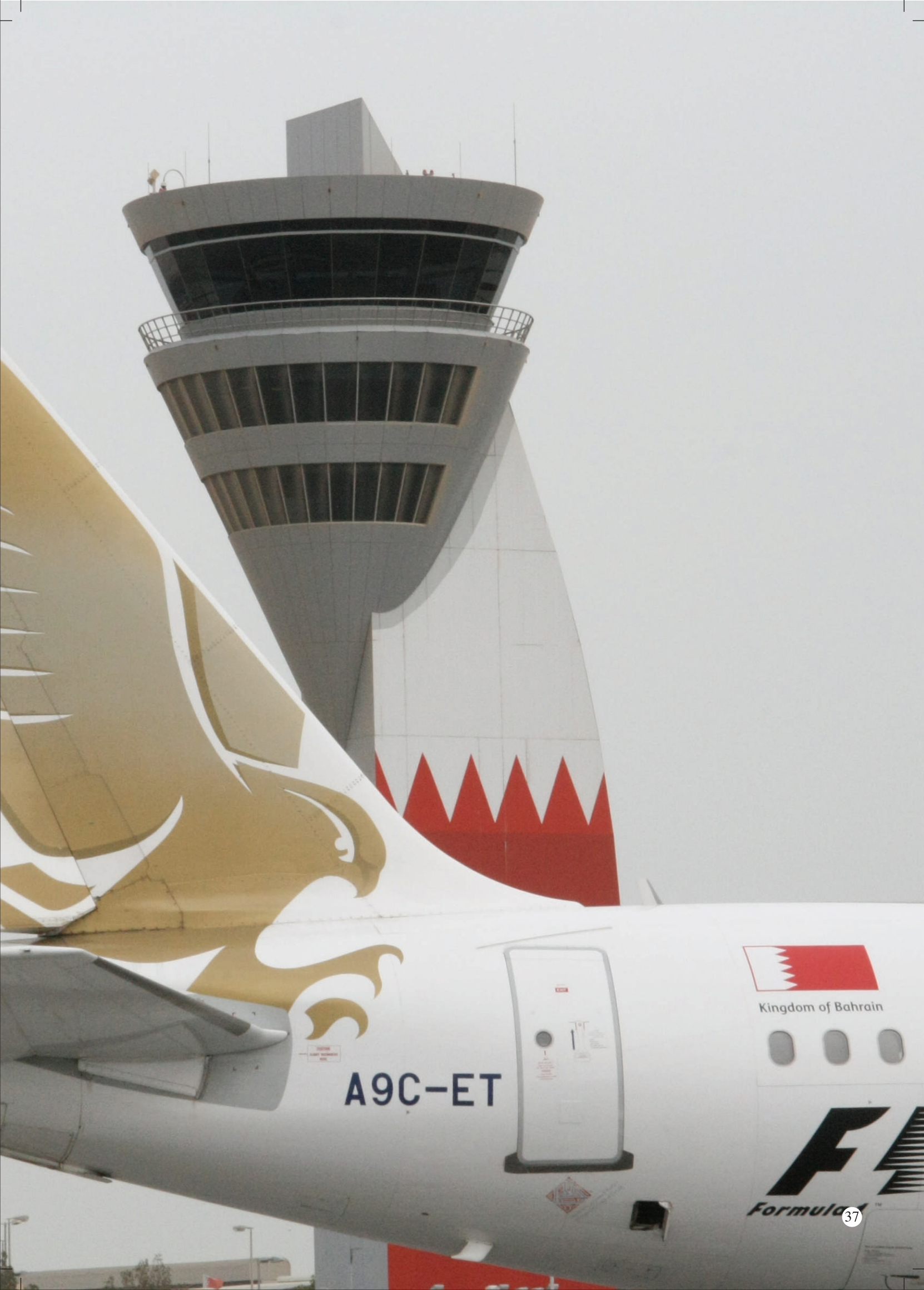


# AIRLINE PERFORMANCE

- Total Traffic by Airline 2008-2009
- Top 10 Passenger Airlines 2009

44 airlines operated to and from Bahrain International Airport in 2009. Gulf Air continued to carry the largest share of passenger traffic at 64% although with marginal growth in volume of less than one percent. Bahrain Air as the second national carrier continued to record impressive growth of 71% in traffic volume which resulted in an increase to 8% of the total market. Other major airlines which shared 19% of the market were Qatar Airways, Emirates Airlines, Jazeera Airways, Air Arabia, Etihad Airways, British Airways, Oman Air and Air India Express. Significant volume growth was recorded by Oman Air at 86% and Jazeera Airways at 37%.

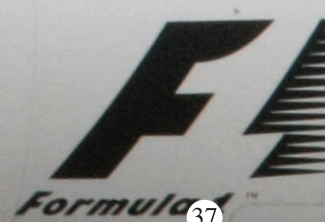




A9C-ET



Kingdom of Bahrain



Formula 1



# AIRLINE PERFORMANCE

## Total Traffic by Airline 2008-2009

Airline	Passengers 2009			Total	Total	%Growth
	Disembarked	Transit	Embarked	2009	2008	
Commercial Airlines				2009	2008	
Air Arabia	93,685	59	87,403	181,147	196,127	-8%
Air India	0	125	0	125	1,301	-
Air India Express	51,735	41,032	39,064	131,831	119,312	10%
Arkfly	0	2,522	1	2,523	-	-
Armavia Air	70	17	34	121	-	-
Bahrain Air	335,528	4,009	350,940	690,477	403,377	71%
Biman-Bangladesh	0	0	0	0	595	-
British Airways	55,347	41,457	59,918	156,722	139,115	13%
Cathay Pacific	29,850	49,894	30,341	110,085	102,986	7%
Condor Airlines	364	9,540	629	10,533	-	-
Cyprus Airways	277	621	482	1,380	8,226	-
Egypt Air	17,674	-	18,755	36,429	28,441	28%
Emirates Airlines	174,105	1,175	160,591	335,871	322,080	4%
Ethiopian Airlines	7,465	8,916	11,763	28,144	22,437	25%
Etihad Airways	81,832	0	92,517	174,349	224,527	-22%
Fly Dubai	1,396	0	1,365	2,761	-	-
Gulf Air	2,891,010	21,155	2,840,051	5,752,216	5,734,067	0.32%
Indian Airlines	16,727	141	20,124	36,992	44,833	-
Iran Air	18,587	-	20,227	38,814	42,230	-8%
Iraq Airways	6,940	471	7,933	15,344	-	-
Jazeera Airways	120,624	31,297	112,527	264,448	192,534	37%
Jet Airways	41,469	-	39,793	81,262	117,084	-31%
KLM	32,739	23,966	33,924	90,629	100,122	-9%
Kuwait Airways	34,461	365	38,444	73,270	78,344	-6%
Lufthansa	19,471	13,561	19,032	52,064	67,816	-23%
Mahan Air	0	-	0	0	4,248	-
Oman Air	58,117	4,417	72,321	134,855	72,526	86%
Pakistan Intl. Airlines	9,432	1,984	5,198	16,614	14,870	12%
Qatar Airways	164,722	1,508	174,559	340,789	393,715	-13%
Royal Jordanian	13,454	0	13,191	26,645	24,375	9%
Saudi Arabian Airlines	23,853	0	23,485	47,338	48,628	-3%
Srilankan Airlines	13,567	15,848	13,645	43,060	87,070	-51%
Syrian Arab Airlines	3,844	3,485	3,826	11,155	12,466	-11%
Travel Service Airlines	2,884	2,884	-	-	-	-
Tunisair	465	574	445	1,484	8,814	-
Turkish Airlines	27,181	13,710	28,677	69,568	58,664	19%
Wataniya Airways	19,459	107	19,610	39,176	-	-
Yemenia-Yemen Airways	4,363	6,490	4,707	15,560	19,674	-21%
Other Commercial*	114	153	106	373	109	242%
<b>Total Commercial</b>	<b>4,369,927</b>	<b>301,483</b>	<b>4,345,628</b>	<b>9,017,038</b>	<b>8,690,713</b>	<b>4%</b>





Airline	Passengers 2009			Total 2009	Total 2008	%Growth
	Disembarked	Transit	Embarked			
Executive Airlines						
Bahrain Royal Flight	480	3	373	856	313	173%
Bahrain V.V.I.P	2,245	0	2,010	4,255	3,915	9%
Bexair	1,812	104	1,823	3,739	5,008	-25%
<b>Total</b>	<b>4,537</b>	<b>107</b>	<b>4,206</b>	<b>8,850</b>	<b>9,236</b>	<b>-4%</b>
Charter Airlines						
Monarch Airlines	5	9,331	0	9,336	29,915	-69%
My Travel Airways	0	119	0	119	90	32%
<b>Total</b>	<b>5</b>	<b>9,450</b>	<b>0</b>	<b>9,455</b>	<b>30,005</b>	<b>-</b>
Private Airlines						
Private Flights	5,644	4,967	5,646	16,082	27,426	-41%
<b>Total</b>	<b>5,644</b>	<b>4,967</b>	<b>5,646</b>	<b>16,257</b>	<b>27,426</b>	<b>-41%</b>
Military						
UK Royal Air Force	0	-	8	8	1	700%
US Air Force	598	650	775	2,023	687	194%
<b>Total</b>	<b>598</b>	<b>650</b>	<b>783</b>	<b>2,031</b>	<b>688</b>	<b>195%</b>
<b>Grand Total</b>	<b>4,380,711</b>	<b>316,657</b>	<b>4,356,263</b>	<b>9,053,631</b>	<b>8,758,068</b>	<b>3%</b>

Source: CAA & BAS

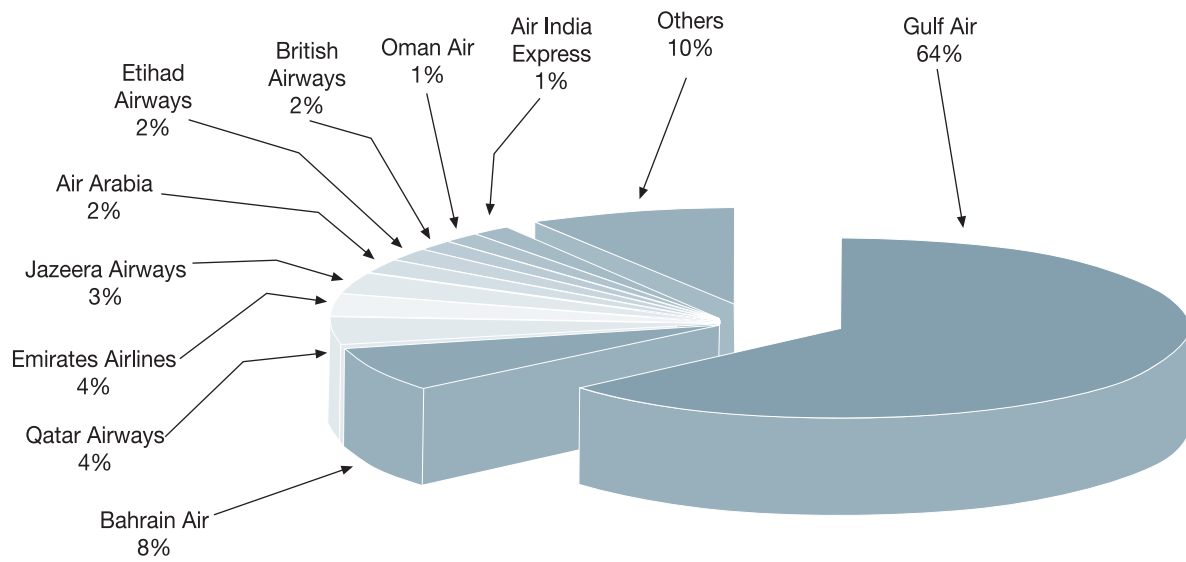


# AIRLINE PERFORMANCE

## Top 10 Passenger Airlines 2009

	Airline	Total Passengers	%Share
1	GULF AIR	5,752,216	64%
2	BAHRAIN AIR	690,477	8%
3	QATAR AIRWAYS	340,789	4%
4	EMIRATES AIRLINES	335,871	4%
5	JAZEERA AIRWAYS	264,448	3%
6	AIR ARABIA	181,147	2%
7	ETIHAD AIRWAYS	174,349	2%
8	BRITISH AIRWAYS	156,722	2%
9	OMAN AIR	134,855	1%
10	AIR INDIA EXPRESS	131,831	1%
	Others	890,926	10%
	<b>TOTAL</b>	<b>9,053,631</b>	<b>100%</b>

Source CAA & BAS



Source: CAA Statistics





## AIRCRAFT MOVEMENTS

- Total Aircraft Movements 2000-2009
- Aircraft Movements by Type of Flight 2004-2009
- Movements by Aircraft Type 2009

There were 103,727 aircraft movements at Bahrain International Airport in 2009, a 3% increase over 2008 with 51,602 arrivals and 52,125 departures. The percentage of passenger flights increased to 80% with the percentage of cargo flights reducing to 11%. Private and other flights also reduced marginally below 10%.

The A320 continued to be the main aircraft handled at the Bahrain International Airport with 32,630 movements, an increase of 12% over 2008. 12,965 A330-200 aircraft movements were handled during 2009, an increase of 29%. 9,135 A319 movements were also handled. Other significant movements were 8,810 A340-300 movements, predominantly by Gulf Air, 4,643 B727-200 movements, 22% less than in 2008, 4,622 B737-800 movements, 38% fewer than in 2008 whilst there were 2,466 B747-400 movements predominantly by British Airways.





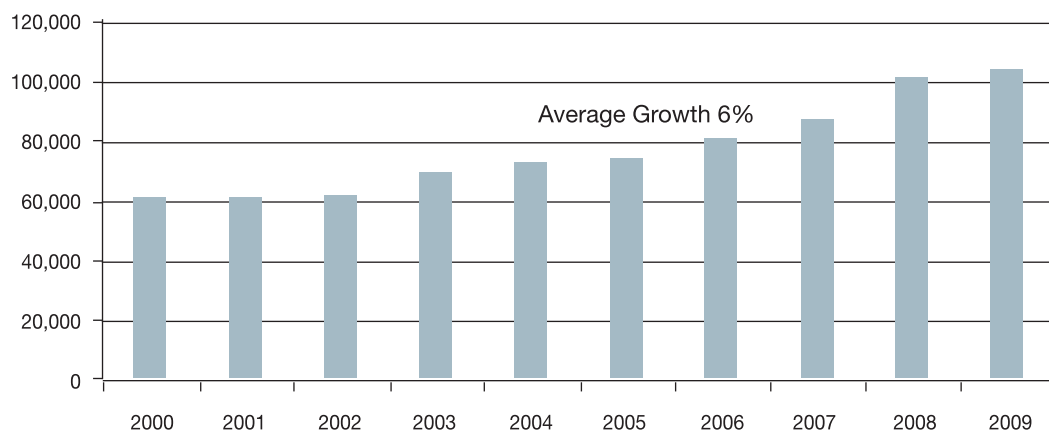
# AIRCRAFT MOVEMENTS

## Total Aircraft Movements 2000-2009

Year	Arrivals	Departures	Total
2000	29,942	30,130	60,072
2001	30,167	30,323	60,490
2002	30,797	31,168	61,965
2003	34,518	34,975	69,493
2004	35,989	36,541	72,530
2005	36,674	37,217	73,891
2006	40,124	40,414	80,538
2007	43,476	43,941	87,417
2008	50,353	50,850	101,203
2009	51,606	52,125	103,737
Average Growth	6%	6%	6%

Source CAA & BAS

## Aircraft Movements Comparison 2000-2009

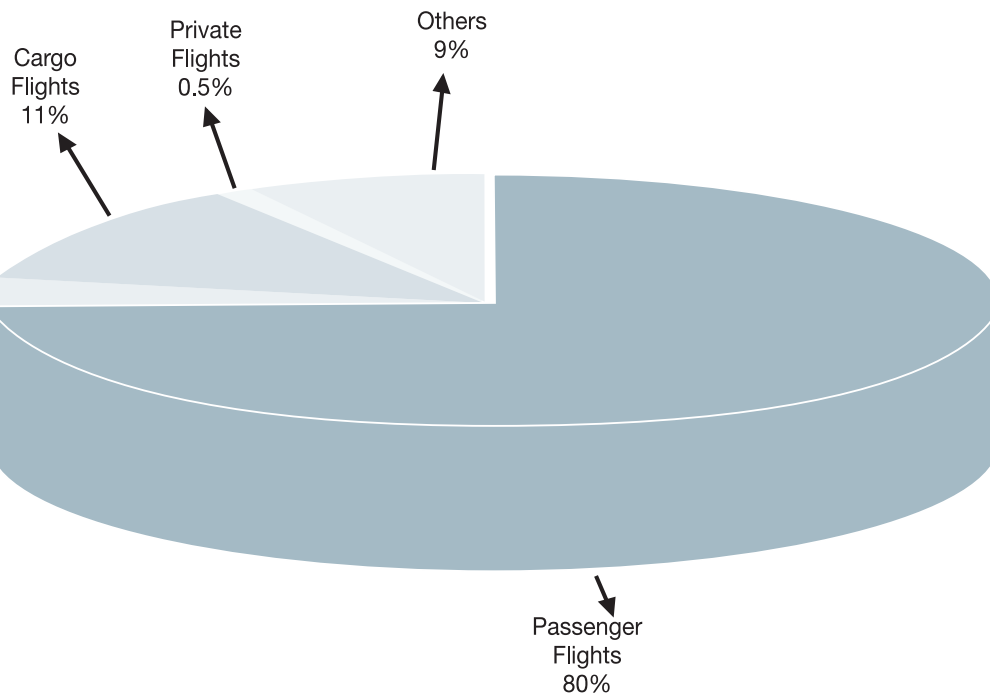




### Aircraft Movements by Type of Flight 2004-2009

TYPE OF FLIGHT	2004	2005	2006	2007	2008	2009
PASSENGER FLIGHTS	57%	60%	67%	69%	76%	80%
CARGO FLIGHTS	20%	18%	16%	17%	14%	11%
PRIVATE FLIGHTS	1%	2%	1%	1%	1%	0.5%
OTHERS	21%	19%	15%	13%	9%	9%

Source CAA





# AIRCRAFT MOVEMENTS

## Movements by Aircraft Type 2009

Aircraft Type	Arrivals	Departures	Total Movements
A124	2	2	4
A139	1	1	2
A306	98	98	196
A30B	432	445	877
A310	127	128	255
A318	2	2	4
A319	4556	4579	9135
A320	16280	16352	32630
A321	2821	2834	5655
A332	6468	6497	12965
A333	580	580	1160
A342	2	2	4
A343	4392	4418	8810
A345	17	17	34
A346	24	24	48
A350	1	1	2
AN12	3	3	6
AN26	1	1	2
AS50	1	1	2
AS65	2	2	4
ATLA	4	4	8
B06	2	2	4
B190	568	572	1140
B350	13	13	26
B407	2	2	4
B412	3	3	6

Aircraft Type	Arrivals	Departures	Total Movements
B427	1	1	2
B430	2	2	4
B461	56	61	117
B462	2	2	4
B463	13	14	27
B703	1	1	2
B721	1	1	2
B722	2304	2339	4643
B732	78	78	156
B733	139	145	284
B735	48	48	96
B736	2	2	4
B737	475	486	959
B738	2310	2312	4622
B741	45	45	90
B742	480	483	963
B743	4	4	8
B744	1230	1237	2466
B74S	42	50	92
B752	46	48	93
B753	36	36	72
B762	16	16	32
B763	128	128	256
B772	360	360	720
B773	29	29	58
B77L	39	39	78





Aircraft Type	Arrivals	Departures	Total Movements
B77W	981	987	1968
BA11	3	3	6
BE20	471	500	971
BE30	1	1	2
BE36	1	1	2
BE40	9	9	18
BE58	2	2	4
BE9L	1	1	2
BN2P	1	1	2
C120	1	1	2
C12M	1	1	2
C130	699	715	1414
C160	4	4	8
C17	97	97	194
C172	6	6	12
C182	22	22	44
C2	357	380	737
C206	1	2	3
C208	10	14	23
C25A	55	58	113
C25B	19	20	39
C30J	94	95	188
C337	2	2	4
C5	33	36	69
C501	2	2	4
C510	3	3	6

Aircraft Type	Arrivals	Departures	Total Movements
C525	4	4	8
C550	6	6	12
C560	225	225	450
C56X	41	45	86
C650	11	11	22
C680	78	84	162
C750	3	3	6
CAT	1	1	2
CL30	61	71	131
CL60	184	193	376
CN35	2	2	4
CRJ2	17	21	36
CRJ9	1	1	2
DA40	1	1	2
DA42	5	5	10
DC10	13	13	26
DC86	878	922	1799
DC87	26	26	52
DC93	156	164	320
DC95	4	4	8
DHC6	1	1	2
E135	157	170	325
E170	230	230	460
E190	173	173	346
E50P	4	4	8
E737	1	1	2



# AIRCRAFT MOVEMENTS

## Movements by Aircraft Type 2009

Aircraft Type	Arrivals	Departures	Total Movements
EC25	2	2	4
EH10	9	10	18
EM10	1	1	2
EXPL	1	1	2
F100	221	221	442
F27	118	118	236
F2TH	9	9	18
F900	51	52	103
FA20	8	11	19
FA50	6	6	12
FA7X	4	4	8
G150	27	30	57
GALX	8	8	16
GL5T	5	5	10
GLEX	24	25	49
GLF2	2	2	4
GLF3	53	53	106
GLF4	302	313	615
GLF5	126	132	258
H25	1	1	2
H25B	278	294	572
H25C	1	1	2
H46	11	11	22
H47	2	3	5
H53	287	321	607
H53S	1	1	2

Aircraft Type	Arrivals	Departures	Total Movements
H60	644	675	1319
HA4T	2	2	4
HEL	8	8	16
HUCO	12	12	24
IL76	126	134	260
IL96	1	1	2
J328	1	1	2
K35R	2	2	4
LJ31	3	3	6
LJ35	96	96	192
LJ45	5	5	10
LJ55	1	1	2
LJ60	31	32	63
LYNX	9	9	18
MD11	230	230	460
MD83	4	4	8
MD90	308	308	616
MU2	4	4	8
P180	14	14	28
P28A	21	21	42
P3	12	12	24
PA31	1	1	2
PA34	3	3	6
PA46	1	1	2
PAY2	4	5	8
PC6T	1	1	2



Aircraft Type	Arrivals	Departures	Total Movements
PRM1	2	2	4
PUMA	1	1	2
R722	58	65	123
RJ1H	3	3	6
RJ70	1	1	2
RJ85	97	108	205
S92	10	10	20
SR22	18	18	36
SW4	17	27	43
T134	2	2	4
T204	16	16	32
TBM7	1	1	2
TBM8	1	1	2
TRIS	2	2	4
V22	13	13	26
VC10	2	2	4
<b>Total</b>	<b>52,794</b>	<b>53,386</b>	<b>106,161</b>

Source CAA  
\* Grand total represents audited movements





# CARGO AND MAIL

- **Total Cargo Throughput by Airline 2009**
- **Total Mail Throughput by Airline 2009**
- **Top 10 Airlines and Total Cargo & Mail Throughput 2009**

Air cargo continued to be very severely affected by the world recession and cargo handled at Bahrain International Airport in 2009 at 311,024 tonnes was 7% lower than the previous year.

Mail shipments also continued to decline to 31,710 tonnes, a decrease of 16% over 2008.

DHL International B.S.C. continued to record the highest volume of cargo and mail, however their market share declined from 42% to 33% compared to 2008. Overall tonnage carried was significantly down over the previous year. Cargo and mail tonnage on Gulf Air whilst remaining at almost the same volume as in 2008 also declined from 22% to 19% of the total market.







# CARGO AND MAIL

## Total Cargo Throughput by Airline (Tonnes) 2009

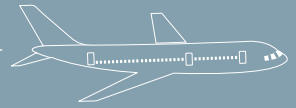
Airline	Import	Export	Transshipment	Total
Commercial Airlines				
Air France	4,504	369	3 1	4,903
Air India Express	554	4	4	563
Sri Lankan Airlines	732	302	252	1,286
Alia	53	158	6	218
Air Arabia	377	3	2	382
Atlas Air	100	227	-	327
Bahrain Air	941	60	86	1,087
British Airways	1,950	1,059	1,575	4,583
Cathay Pacific	1,804	89	10,416	1,904
DHL	29,232	247	56,720	86,199
Egypt Air	302	1	0	303
Emirates	10,600	2,086	30	12,715
Ethiopian	122	20	0,245	142
Etihad Airways	4,261	675	175	5,112
Gulf Air	21,817	1,268	41,195	64,280
Indian Airlines	54	3	0	57
Iran Air	191	3	19	214
Jet Airways	1,709	394	1	2,105
KLM	1,537	897	30	2,465
Kuwait Airways	383	276	11	670
Lufthansa	2,318	394	47	2,759
Malaysian	115	-	-	115
Martinair NV	1,730	130	0	1,860
Maximus AC	40	28	-	68



Airline	Import	Export	Transshipment	Total
Commercial				
Airlines				
Oman Air	844	45	28	916
Pakistan Airlines	64	3	10	76
PWC Logistics	334	-	8	342
Qatar Airways	5,560	1,503	87	7,150
Saudia	136	22	0	158
Singapore Airlines	567	90	-	657
Turkish Airlines	136	6	1	143
Others	9,517	872	42	10,431
<b>Total Airlines</b>	<b>102,584</b>	<b>11,235</b>	<b>100,371</b>	<b>214,190</b>

#### Total Cargo Throughput by Airline (Tonnes) 2009

Airline	Import	Export	Transshipment	Total
Trucks				
Air France	-	-	746	746
Sri Lankan Airlines	-	-	91	91
Bemsu Airways	-	-	230	230
Cargolux	79	221	-	300
Cathay Pacific	2	-	406.734	408
DHL	2,508	0	2,193	4,701
Emirates	-	-	6,704	6,704
Gulf Air	4	-	4,122	4,125
Kalitta Air	480	0	172	652
KLM	-	-	115	115
Kuwait Airways	-	-	242	242
Lufthansa	-	-	115	115
Qatar Airways	-	-	1,922	1,922
<b>Total Trucks</b>	<b>3,071</b>	<b>221</b>	<b>17,056</b>	<b>20,349</b>
<b>Total Commercial</b>	<b>105,655</b>	<b>11,456</b>	<b>117,427</b>	<b>234,539</b>
Military				
UK Royal Air Force	309	176	-	484
UAE Air Force	6	-	-	6
US Navy	7,776	7,481	-	15,257
<b>Total Military</b>	<b>8,091</b>	<b>7,656</b>	<b>-</b>	<b>15,747</b>
<b>Total</b>	<b>34,074</b>	<b>26,664</b>	<b>-</b>	<b>60,738</b>
<b>Grand Total</b>	<b>147,820</b>	<b>45,777</b>	<b>117,427</b>	<b>311,024</b>



# CARGO AND MAIL







### Total Mail Throughput by Airline (Tonnes) 2009

Airline	Import	Export	Transshipment	Total
British Airways	14	480	1	495
Cathay Pacific	18	5	0	23
DHL	7,883	17,800	-	25,683
Emirates	201	480	3	684
Etihad Airways	97	16	0	113
Gulf Air	122	731	1	854
KLM	51	264	0	315
Kuwait Airways	76	-	0	76
Lufthansa	5	194	0	199
Qatar Airways	99	104	0	203
Saudia	19	2	0	21
Turkish Airlines	3	14	0	18
Others	1,068	1,956	0	3,024
<b>Total</b>	<b>9,656</b>	<b>22,048</b>	<b>6</b>	<b>31,710</b>



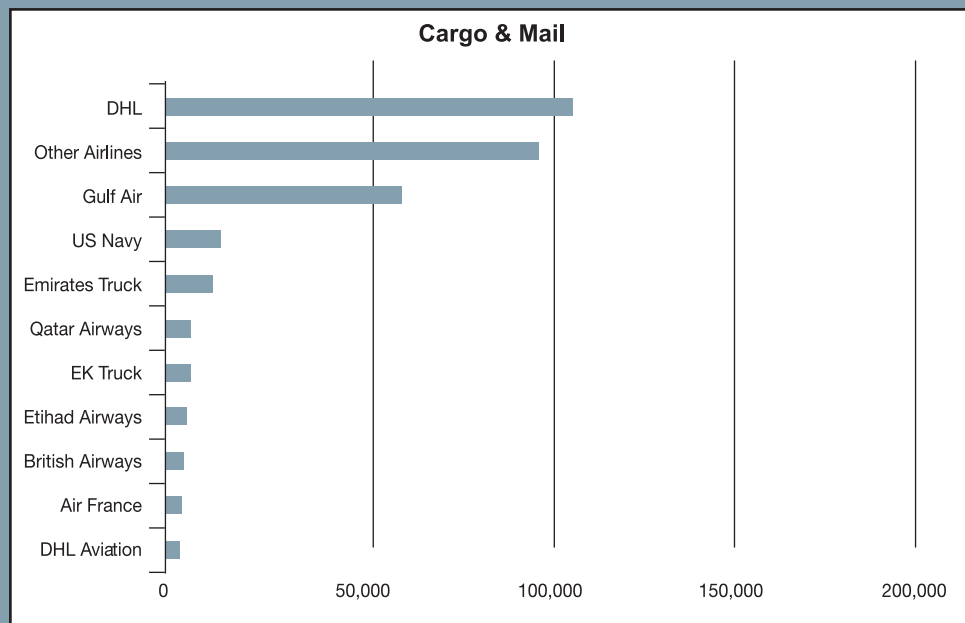
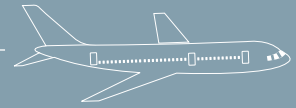


# CARGO AND MAIL

**Top 10 Airlines and Total Cargo & Mail Throughput (Tonnes) 2009**

	Airline	Total Weight (Tonnes)	%Share
1	DHL	116,583	33%
2	Gulf Air	65,134	19%
3	Emirates	13,399	4%
4	Qatar Airways	7,353	2%
5	Etihad Airways	5,225	2%
6	British Airways	5,078	1%
7	Air France	4,903	1%
8	Lufthansa	2,958	-
9	KLM	2,780	1%
10	Kuwait Airways	746	-
	Other Airlines	103,097	30%
	<b>Grand Total</b>	<b>342,734</b>	<b>100%</b>







# IMMIGRATION STATISTICS

- **Total Passengers through Immigration by Nationality 2008-2009**
- **Total Passengers through Immigration by Country 2008-2009**

Immigration statistics recording the number of passengers embarking and disembarking at Bahrain International Airport are reported on a monthly basis by the Ministry of Interior.

During 2009 2,337,737 passengers arrived in the Kingdom and 2,102,824 departed, an overall increase of 7% over 2008.

Indian nationals continued to represent the largest volume at 19% of the total whilst Bahraini nationals represented 18% and nationals from Saudi Arabia represented 9%, reflecting a similar balance to previous years. Although relatively small in volume, significant increases were recorded in the number of Russian nationals, up by 83%, also Chinese nationals, an increase of 49% with Sudanese increasing by 35% and Yemeni by 25%. The number of UK and US nationals remained static.



# IMMIGRATION STATISTICS





# IMMIGRATION STATISTICS

## Total Passengers through Immigration by Nationality 2008-2009

Nationality	2009		Total Passengers		Growth
	Arrivals	Departures	2009	2008	
Australia	16,483	16,456	32,939	33,890	-3%
Bahrain	393,686	397,236	790,922	732,108	8%
Bangladesh	45,845	27,970	73,815	75,242	-2%
Belgium	4,086	4,136	8,222	8,311	-1%
Canada	26,640	26,694	53,334	52,742	1%
China	27,730	20,986	48,716	32,634	49%
Egypt	47,568	44,470	92,038	86,948	6%
Ethiopia	7,763	8,856	16,619	19,798	-16%
Germany	23,195	23,136	46,331	53,084	-13%
France	28,489	28,346	56,835	69,601	-18%
Greece	5,070	5,108	10,178	12,657	-20%
India	475,896	377,104	853,000	798,904	7%
Indonesia	11,976	11,284	23,260	20,569	13%
Iran	7,305	6,995	14,300	15,045	-5%
Iraq	9,559	9,643	19,202	16,805	14%
Ireland	8,752	8,609	17,361	15,190	14%
Italy	10,872	11,113	21,985	21,431	3%
Japan	8,850	8,290	17,140	19,553	-12%
Jordan	33,400	32,459	65,859	65,007	1%
South Korea	10,190	8,616	18,806	16,844	12%
Lebanon	31,838	31,449	63,287	66,195	-4%
Malaysia	17,655	17,417	35,072	42,328	-17%
Morocco	9,615	9,685	19,300	17,126	13%
Nepal	40,024	18,494	58,518	54,101	8%



Nationality	2009		Total Passengers		Growth
	Arrivals	Departures	2009	2008	
Netherlands	8,692	8,831	17,523	17,548	0%
New Zealand	4,736	4,774	9,510	8,227	16%
Oman	19,576	19,629	39,205	39,495	-1%
Pakistan	77,072	61,848	138,920	133,159	4%
Palestine	5,407	5,272	10,679	10,500	2%
Philippines	110,016	70,563	180,579	172,321	5%
Russian Federation	4,855	4,597	9,452	5,156	83%
Saudi Arabia	210,276	207,514	417,790	358,686	16%
Singapore	3,690	3,649	7,339	7,041	4%
South Africa	10,451	10,059	20,510	20,711	-1%
Spain	4,471	4,528	8,999	7,729	16%
Sri Lanka	13,740	12,338	26,078	23,788	10%
Kuwait	102,825	100,037	202,862	150,848	34%
Qatar	46,983	46,453	93,436	106,521	-12%
Sudan	23,343	12,725	36,068	26,651	35%
Syria	18,174	16,630	34,804	32,964	6%
Thailand	14,687	13,995	28,682	23,927	20%
Turkey	13,468	12,908	26,376	20,792	27%
U.A.E.	45,710	45,648	91,358	93,509	-2%
United Kingdom	131,382	131,509	262,891	262,140	0%
United States	84,041	81,332	165,373	165,193	0%
Yemen	12,679	10,711	23,390	18,762	25%
Other Nationalities	68,976	62,722	131,698	115,090	15%
<b>TOTAL</b>	<b>2,337,737</b>	<b>2,102,824</b>	<b>4,440,561</b>	<b>4,166,871</b>	<b>7%</b>



# IMMIGRATION STATISTICS

## Total Passengers through Immigration by Country 2008-2009

Nationality	2009		Total Passengers		Growth
	Arrivals	Departures	2009	2008	
Afghanistan	2,645	3,099	5,744	688	735%
Australia	3,456	1,285	4,741	6,531	-27%
Bangladesh	45,542	22,512	68,054	71,113	-4%
Canada	5,613	1,308	6,921	8,091	-14%
China	20,864	9,990	30,854	22,655	36%
Cyprus	3,548	8,087	11,635	14,615	-20%
Egypt	55,824	56,398	112,222	110,974	1%
Ethiopia	7,268	7,910	15,178	18,238	-17%
Germany	24,945	31,837	56,782	8,263	587%
France	18,544	21,670	40,214	50,013	-20%
Greece	4,050	7,447	11,497	14,788	-22%
Hong Kong	4,908	13,596	18,504	17,582	5%
India	404,960	261,614	666,574	638,380	4%
Indonesia	9,628	3,451	13,079	13,325	-2%
Iran	72,852	73,741	146,593	144,738	1%
Iraq	27,361	23,693	51,054	20,419	150%
Ireland	2,435	636	3,071	3,199	-4%
Italy	4,914	2,234	7,148	8,277	-14%
Japan	4,346	758	5,104	6,029	-15%
Jordan	40,673	45,328	86,001	89,072	-3%
South Korea	6,581	1,578	8,159	7,030	16%
Lebanon	42,462	46,784	89,246	74,023	21%
Malaysia	31,158	16,750	47,908	52,779	-9%
Morocco	3,627	3,163	6,790	9,953	-32%





Nationality	2009		Total Passengers		Growth
	Arrivals	Departures	2009	2008	
Nepal	38,296	14,202	52,498	49,263	7%
Netherland	13,721	22,906	36,627	36,527	0%
Oman	41,837	51,466	93,303	69,647	34%
Pakistan	66,399	39,188	105,587	104,264	1%
Philippines	97,019	31,290	128,309	125,104	3%
Russian Federation	2,039	792	2,831	2,448	16%
Saudi Arabia	71,445	90,192	161,637	156,182	3%
Singapore	2,945	1,608	4,553	5,167	-12%
South Africa	4,166	1,293	5,459	6,285	-13%
Sri Lanka	12,198	10,751	22,949	24,018	-4%
Kuwait	169,683	178,152	347,835	287,079	21%
Qatar	138,415	170,703	309,118	320,115	-3%
Sudan	19,925	10,285	30,210	20,828	45%
Switzerland	1,797	968	2,765	3,905	-29%
Syria	43,100	43,234	86,334	66,757	29%
Thailand	36,304	28,803	65,107	72,122	-10%
Tunisia	2,400	1,663	4,063	6,568	-38%
Turkey	30,362	37,335	67,697	57,823	17%
U.A.E.	459,326	519,500	978,826	947,519	3%
United Kingdom	106,551	111,781	218,332	213,814	2%
United States	28,401	7,410	35,811	42,009	-15%
Yemen	12,716	11,922	24,638	19,118	29%
Other Countries	90,488	52,511	142,999	119,534	20%
<b>TOTAL</b>	<b>2,337,737</b>	<b>2,102,824</b>	<b>4,440,561</b>	<b>4,166,871</b>	<b>7%</b>







Civil Aviation Affairs  
Kingdom of Bahrain